



ABILENE MPO POLICY BOARD MEETING

City Council Chambers – Abilene City Hall | 555 Walnut St., Abilene, TX
Tuesday, February 21, 2023 at 1:30 p.m.

1. Call to Order.

Public comment on any item on the agenda.

2. Consideration and Take Action on the minutes of the December 13, 2022 meeting.

3. Receive a Report, Hold a Discussion, and Take Action on the Election of a Vice-Chair. (*Unexpired Term through September 30, 2024*)

Background

The By-Laws require the Transportation Policy Board to elect a Chairperson and a Vice-Chairperson from the voting members. The Vice-Chairperson shall assume the duties of the Chair in the absence of the Chairperson. The Chairperson shall be an elected official. The officers may be elected (a) by the individual person or (b) by the membership position. The officers shall be elected for a term of two (2) federal fiscal years and may be re-elected.

Currently Councilman Price holds the term of Chairperson (expires 09-30-2024) and Judge Bolts holds the term of Vice-Chairperson (expires 09-30-2024).

Current Situation

Judge Bolts retired in December of 2022, so the position of Vice-Chairperson will need to be filled. That unexpired term expires on September 30, 2024.

Recommendation from the Technical Advisory Committee (TAC)

Not applicable.

Action Requested

1. Election of a Vice-Chairperson to fill the unexpired term.

4. Receive a Report, Hold a Discussion, and Take Action on the FY 2023 Safety Performance Measure (PM1).

Background

In order to provide more transparency in the selection and prioritization of transportation projects, federal legislation beginning with the Moving Ahead for Progress in the 21st Century Act (MAP-21) and continuing to the current Fixing America's Surface Transportation Act (FAST Act), stipulate that a performance measurement framework must be used in the development of the TIP and MTP. Performance measures are data driven and are intended to create a platform for decision making which allows for reasonable comparison of investment options while maintaining adequate flexibility to adapt these investment strategies to unique state, regional, and local needs and conditions. Following State Department of Transportation target setting, MPOs must set their own targets or agree with those set by the State DOT.

Performance measures at the federal level are focused on the following national goals: Safety (PM 1), Infrastructure condition (PM 2), Congestion reduction, System Reliability/Freight Movement and Economic Vitality (PM 3), environmental sustainability, and reduced project delivery delays. In addition to the national goals listed above performance measures also apply to transit systems regarding state of good repair status for those systems receiving federal funding. This state of good repair is assessed and targets are set through the Transit Asset Management (TAM) Plan. Once federal rules have been adopted, State Department of Transportation then set statewide performance targets for each measure. Following this, MPOs must then make a choice to set their own targets or agree to support the targets established by the State.

The State has set the 2023 **Safety (PM1)** targets in its Strategic Highway Safety Plan (SHSP). The targets in any given year are expressed as a 5-year average of past data and future projections. Targets are established for the following areas: Fatalities; Fatality Rate per 100 MVMT (Million Vehicle Miles Traveled); Serious Injuries; Serious Injury Rate per 100 MVMT; and Non-motorized fatalities and serious injuries.

Current Situation

The Safety (PM 1) performance measure is due annually 180 days after TxDOT adopts their targets. The deadline for the MPO to adopt the PM 1 targets is February 27, 2023.

Recommendation from the Technical Advisory Committee (TAC)

As part of the Transportation Improvement Program (TIP) amendment presented, the PM 1 data was provided to the TAC and became part of the motion of the TIP.

FY 2023 Safety Performance Measure (PM 1) (continued)

FY2023 STRATEGIC HIGHWAY SAFETY PLAN (SHSP)
PERFORMANCE TARGETS

Performance Measures and Target Setting—The Texas Transportation Commission (TTC) adopted Minute Order 115481 in May of 2019, directing the Texas Department of Transportation (TxDOT) to work toward the goal of reducing the number of deaths on Texas roadways by half by the year 2035 and to zero by the year 2050. TxDOT has modified its performance measures and target calculations accordingly.

Performance Targets:

Target: Total number of traffic fatalities

2023 Target: To decrease the expected rise of fatalities to not more than a five-year average of 3,682 fatalities in 2023. The 2023 Target expressed as a 5-year average would be as follows:

Year	Target or Actual Data
2019	3,619
2020	3,874
2021	4,486
2022	3,272
2023	3,159
2023 Target expressed as 5-year average	3,682

As noted in the table above, the calendar year target for 2023 would be 3,159 fatalities.

Target: Total number of serious injuries

2023 Target: To decrease the expected rise of serious injuries to not more than a five-year average of 17,062 serious injuries in 2023. The 2023 Target expressed as a 5-year average would be as follows:

Year	Target or Actual Data
2019	15,858
2020	14,659
2021	19,434
2022	17,539
2023	17,819
2023 Target expressed as 5-year average	17,062

As noted in the table above, the calendar year target for 2023 would be 17,062 serious injuries.

FY2023 STRATEGIC HIGHWAY SAFETY PLAN (SHSP)
PERFORMANCE TARGETS

Target: Fatalities per 100 million vehicle miles traveled

2023 Target: To decrease the expected rise of fatalities per 100 MVMT to not more than a five-year average of 1.38 fatalities per 100 MVMT in 2023. The 2023 Target expressed as a 5-year average would be as follows:

Year	Target or Actual Data
2019	1.26
2020	1.49
2021	1.70
2022	1.25
2023	1.20
2023 Target expressed as 5-year average	1.38

As noted in the table above, the calendar year target for 2023 would be 1.20 fatalities per 100 MVMT.

Target: Serious Injuries per 100 million vehicle miles traveled

2023 Target: To decrease the serious injuries per 100 MVMT to not more than a five-year average of 6.39 serious injuries per 100 MVMT in 2023. The 2023 Target expressed as a 5-year average would be as follows:

Year	Target or Actual Data
2019	5.50
2020	5.63
2021	7.35
2022	6.70
2023	6.77
2023 Target expressed as 5-year average	6.39

As noted in the table above, the calendar year target for 2023 would be 6.77 serious injuries per 100 MVMT.

FY2023 STRATEGIC HIGHWAY SAFETY PLAN (SHSP)
PERFORMANCE TARGETS

Target: Total number of non-motorized fatalities and serious injuries

2023 Target: To decrease the expected rise of non-motorized fatalities and serious injuries to not more than a five year average of 2,357 non-motorized fatalities and serious injuries in 2023. The 2023 Target expressed as a 5-year average would be as follows:

Year	Target or Actual Data
2019	2,291
2020	2,206
2021	2,628
2022	2,321
2023	2,340
2023 Target expressed as 5-year average	2,357

As noted in the table above, the calendar year target for 2023 would be 2,340 non-motorized fatalities and serious injuries.



R-2023-01

A RESOLUTION OF THE ABILENE METROPOLITAN PLANNING ORGANIZATION ADOPTING TARGETS FOR SAFETY PERFORMANCE MEASURES (PM1) AS ESTABLISHED BY THE TEXAS DEPARTMENT OF TRANSPORTATION.

WHEREAS, The Moving Ahead for Progress in the 21st Century Act (MAP-21) and subsequent Fixing America’s Surface Transportation (FAST) Act require the implementation of Performance Measures in the transportation Planning process; and,

WHEREAS, The Texas Department of Transportation (TxDOT) has established targets for five (5) Safety Performance measures based on five-year rolling averages for:

- 1) Number of Fatalities,
- 2) Rate of Fatalities per 100 Million Vehicle Miles Traveled (VMT),
- 3) Number of Serious Injuries,
- 4) Rate of Serious Injuries per 100 Million VMT, and
- 5) Number of Non-Motorized Fatalities and Non-Motorized Serious injuries; and,

WHEREAS, TxDOT has established state-wide safety targets in the Strategic Highway Safety Plan (SHSP) for number of fatalities, rate of fatalities, and number of serious injuries.

NOW THEREFORE, BE IT RESOLVED, THAT THE ABILENE METROPOLITAN PLANNING ORGANIZATION OF ABILENE TEXAS, hereby supports and adopts the five safety performance measures established by the Texas Department of Transportation as indicated in Attachment A, attached hereto.

BE IT FURTHER RESOLVED, THAT THE MPO POLICY BOARD will plan and program projects compatible with the achievement of said targets.

PASSED, APPROVED and ADOPTED ON THIS _____ day of _____, 2023

ABILENE METROPOLITAN PLANNING ORGANIZATION

By:

Councilman Shane Price, MPO Chair

Attest:

Approved:

E’Lisa Smetana
MPO Executive Director

Kelley Messer,
First Assistant City Attorney, City of Abilene



R-2023-01

ATTACHMENT A

TxDOT Updated Safety Performance Targets for FY 2023

2023 Safety Targets	Number of Fatalities (FARS/CRIS/ARF DATA	Rate of Fatalities (FARS/CRIS/ARF DATA	Number of Serious Injuries (FARS/CRIS DATA	Serious Injury Rate (CRIS DATA	Total Number of Non-Motorized Fatalities and Serious Injuries (FARS/CRIS DATA
2019	3,619	1.26	15,858	5.50	2,291
2020	3,874	1.49	14,659	5.63	2,206
2021	4,486	1.70	19,434	7.35	2,628
2022	3,272	1.25	17,539	6.70	2,321
2023	3,159	1.20	17,819	6.77	2,340
2023 Target expressed as 5-Year Average:	3,682	1.38	17,062	6.39	2,357

Action Requested

- 1. Approval of the resolution for the FY 2023 Safety Performance Measure (PM 1).

5. Receive a Report, Hold a Discussion and Public Hearing, and Take Action on an amendment to the FYs 2020-2045 Metropolitan Transportation Plan (MTP).

Background

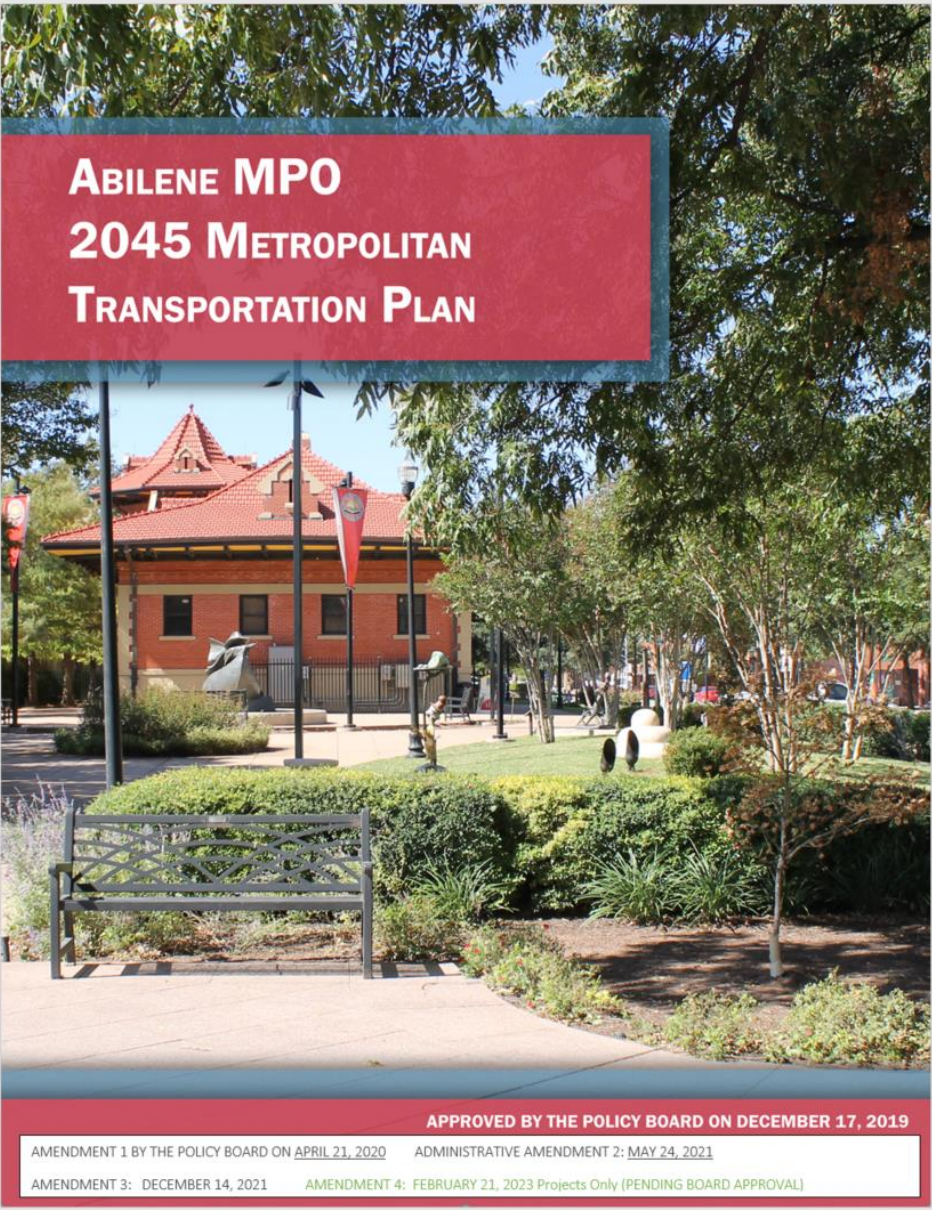
The Metropolitan Transportation Plan (MTP) is the long-range plan or “blueprint” that has a minimum twenty-year planning horizon and is updated every five years. The MTP is a financially constrained document but it also includes a list of additional projects that could be implemented as funding becomes available. The original MTP was approved at the December 17, 2019 meeting. It was subsequently amended on April 21, 2020, May 24, 2021, and December 14, 2021.

Current Situation

Changes are needed to incorporate projects into the MTP and to adjust project scope/cost. These changes will be discussed in detail at the meeting.

Recommendation from the Technical Advisory Committee (TAC)

The TAC at their February 7, 2023 meeting recommended approval to the Policy Board on the amendment to the FYs 2020-2045 Metropolitan Transportation Plan (MTP) as presented.



MTP 2020-2045 Amendments

Amendment 1 – April 21, 2020: Cover Sheet – Dates; Technical Advisory Committee – Member changes; Table of Contents – Page numbers; List of Figures – Numbers; Page 13 – Travel Demand Model; Page 19 – Environment & Resiliency; Page 38-39 – Planning Factors; Page 42 – Performance Measure Monitoring; Page 70 – Land Use; Chapter 8 and 9 combined into (8. Financial Plan & Project Lists); Page 93 – Year of Expenditure (YOE) Costs & Funding Summary (total projects cost); Page 98 & 99 – Added PM (Performance Measure) column and added * about YOE; Page 101 – Changed Unfunded Projects to Illustrative Projects; Page 102 – Changed Unfunded Projects Map to Illustrative Projects Map and Page 104 – Current Projects in Development.

Administrative Amendment 2 - May 24, 2021: Corrected an error on the grouped projects page 113 in the MTP document, second grouped project was listed with the local ID LVARI-XSR-PM and was changed to LVARI-XSR-RM.

Amendment 3 – Dec 14, 2021: – Updated grouped projects to include a bridge category; added in CSJ #0972-03-021 FM 1082 and SL 322 at SH 36 project.

Amendment 4 – February 21, 2023: (Pending Board Approval) Cover Page (Dates), Updates to Chapter 7 Project Prioritization (Table 24 Project Rankings), Chapter 8, Financial Plan & Project Lists (Table 33 Funded Projects, Table 34 Illustrative Project, Table 35 Grouped Projects, Figure 46 Funded and Illustrative Projects Map, Figure 47 Funded Projects Map)

Public Notice

Originally published at reporternews.com on 02/12/2023

ABILENE METROPOLITAN PLANNING ORGANIZATION PUBLIC NOTICE The Abilene Metropolitan Planning Organization (MPO) coordinates transportation planning within the MPO Boundary Planning Area in Taylor and Jones Counties. The MPO is soliciting public input on amendments to the FYs 2020-2045 Metropolitan Transportation Plan (MTP), the 10-Year Plan, and the FYs 2023-2026 Transportation Improvement Program (TIP). NOTE: This public notice of public participation activities and time established for public review of and comments on the TIP development process will satisfy the FTA's Program of Projects requirements. Documents will be posted to the public participation tab at www.abilenemp.org. Written comments will be accepted through 12:00 pm on February 21, 2023 and can be emailed to abilenemp@abilenetx.gov. An MPO Policy Board meeting will be held on February 21 at 1:30 pm in the Abilene City Council Chambers. You are welcome to comment on these documents at that meeting. Special communication or accommodation needs can be requested by contacting the MPO at (325) 437-9999 at least 48 hours in advance of the meeting. We value your input and ideas on transportation.

Table 24: Project Ranking

						PM 1	PM 2	PM 3	PM 4	PM 5	
RANK	Fund	Location	From	To	Description	Safety Score (Out of 25)	System Performance Score (Out of 20)	Preservation Score (Out of 25)	Development Score (Out of 20)	Environmental Score (Out of 10)	Total Score (Out of 100)
1	✓	IH 20	SH 351	Callahan County Line	Add two main lanes for a six lane freeway and replace overpass structures	19.2	20.0	11.7	5.3	7.5	63.7
2	✓	IH 20	Abilene West City Limits	Near Catclaw Creek	Add two main lanes for a six lane freeway and replace overpass structures	13.3	18.7	20.0	0.0	7.5	59.5
3	✓	FM 89 (Buffalo Gap Rd)	Rebecca Ln	Just N. of US 83	Access Management/Intersection Improvements	15.0	17.3	5.0	13.3	7.5	58.2
4	✓	US 83/84	S 7th St	N 10th St	Add 2 Main Lanes and Replace Overpass Structures	18.3	18.7	13.3	0.0	5.0	55.3
5	✓	FM 89 (Buffalo Gap Rd)	Near Bettles Ln	Rebecca Ln	Access Management	13.3	16.0	5.0	13.3	7.5	55.2
6		FM 89 (Buffalo Gap Rd)	S. of Chimney Rock Rd	S. of Antilley Rd	Widen to 6 Lanes with Access Control	16.7	8.0	5.0	13.3	5.0	48.0
7	✓	IH 20	Judge Ely Blvd	SH 351	Add two main lanes for a six lane freeway and construct overpass structures	5.0	18.7	8.3	6.7	7.5	46.2
8	✓	IH 20	Near Catclaw Creek	SH 351	Add two main lanes for a six lane freeway and replace overpass structures	11.7	10.7	11.7	6.7	5.0	45.7
9	✓	US 83/84	N 10th St	IH 20	Add 2 Main Lanes and Replace Overpass Structures	10.0	18.7	11.7	0.0	5.0	45.3
10	✓	FM 707	FM 89 (Buffalo Gap)	US 83	Widen to 4 lanes and include turn lanes/shoulders	17.5	5.3	5.0	6.7	5.0	39.5
11		IH 20	East of Loop 322	Abilene-East City Limits	Frontage Roads- Conversion and Bus I20	4.2	18.7	6.7	0.0	7.5	37.9
11.5		Loop 322	SH 36	SH 36	Intersection Improvements	5.8	14.7	3.3	8.0	5.0	36.8
12	✓	FM 89 (Buffalo Gap Rd)	Antilley Road Intersection		Lower Profile/Intersection Improvements	8.3	8.0	5.0	6.7	5.0	33.0
13	✓	US 83	1.0 miles north of FM 3034	Taylor County Line	Construct New Overpass	0.8	9.3	6.7	13.3	2.5	32.7
13.5	✓	US 83	Jones County Line	Near W. Summit Rd	Construct New Overpass	0.8	9.3	6.7	13.3	2.5	32.7
14	✓	Hartford St	at Little Elm Creek		Bridge to Replace Low Crossing	3.3	4.0	20.0	0.0	5.0	32.3
15	✓	Maple St	County Rd 111-1 (Colony Hill Rd)	FM 707	Widen to 4 lanes and include turn lanes	9.2	5.3	5.0	6.7	5.0	31.2
16	✓	FM 707	US 83/84	FM 1750 (Oldham Ln)	Widen to 4 Lanes with Center Turn Lane and intersection improvements at FM 1750	5.0	5.3	6.7	6.7	7.5	31.2
17	✓	Bus I20	Loop 322	Elmdale Rd	Rehab, Add Shoulders, and Turn Lanes	1.7	6.7	8.3	6.7	7.5	30.8
18	✓	Maple St	Industrial Blvd	Loop 322	Widen to 4 lanes and include turn lanes	8.3	5.3	5.0	6.7	5.0	30.3
19		Loop 322 Frontage Rd	FM 1750 (Oldham Ln)	Bus I20	Operational Improvements	0.8	8.0	1.7	13.3	5.0	28.8
20	✓	Maple St	S 11th St	S 27th St	Widen to 4 lanes and include turn lanes	8.3	5.3	3.3	6.7	5.0	28.7
21		SH 36	1.2 Mi S. of FM 18	FM 1750 (Oldham Ln)	Widen to 4 Lanes	8.3	6.7	8.3	0.0	5.0	28.3

						PM 1	PM 2	PM 3	PM 4	PM 5	
RANK	Fund	Location	From	To	Description	Safety Score (Out of 25)	System Performance Score (Out of 20)	Preservation Score (Out of 25)	Development Score (Out of 20)	Environmental Score (Out of 10)	Total Score (Out of 100)
22	✓	Maple St	S 27th St	Industrial Blvd	Widen to 4 lanes and include turn lanes	3.3	5.3	6.7	6.7	5.0	27.0
23	✓	Marigold St	FM 3438 (Arnold Blvd)	Wall St	Rehabilitate, Add Bridge, Shoulders and Turn Lanes	0.0	5.3	16.7	0.0	5.0	27.0
24	✓	US 83/84 Frontage	North of FM 707	Near Antilley Rd	Add Frontage Rd at US 83/84 Connecting to FM 707 to Antilley Rd	0.0	12.0	1.7	10.7	2.5	26.8
25	✓	EN 10th St	Griffith Rd	Loop 322	Widen to 4 lanes and include turn lanes	6.7	5.3	6.7	0.0	7.5	26.2
26		US 83 Frontage	Old Anson Rd	FM 3034	Change Frontage Road Operations	0.0	8.0	8.3	6.7	2.5	25.5
27		Industrial Blvd	Loop 322	FM 1750 (Oldham Ln)	Widen to 4 Lanes with CLT	8.3	5.3	6.7	0.0	5.0	25.3
27.5	✓	FM 1082	West of Cheyenne Creek Road	East of Dam	New Roadway north of FM 1082	0.0	2.7	10.0	5.3	5.0	23.0
28		ES 27th St	Maple St	FM 1750 (Oldham Ln)	Widen to 4 Lanes with CLT	8.3	5.3	6.7	0.0	2.5	22.8
29	✓	FM 3034	US 83	FM 600	Rehab and Widen	7.5	4.0	5.0	0.0	5.0	21.5
30		FM 1750 (Oldham Ln)	0.5 Mi S of FM 707	FM 204 (Clark Rd)	Widen to 4 Lanes	7.5	5.3	3.3	0.0	5.0	21.2
31		Iberis Rd (CR164/338)	US 83/84	FM 89 (Buffalo Gap)	Rehab, Add Shoulders	5.0	4.0	5.0	0.0	5.0	19.0
32		FM 1750 (Oldham Ln)	Industrial Blvd	0.5 Mi S. of FM 707	Widen to 4 Lanes	5.0	5.3	3.3	0.0	5.0	18.7
33	✓	Loop 322	IH 20	SH 351	Construct New 2 Lane Highway of Future 4 Lanes with Access Control	0.0	6.7	1.7	6.7	2.5	17.5
34		Memorial Dr	Preston Trail	US 83/84	Extend Rdwy (Public Comment)	0.0	2.7	5.0	6.7	2.5	16.8
35		Memorial Dr	Ridge Crossing	FM 707	Extend Rdwy (Public Comment)	0.0	2.7	3.3	6.7	2.5	15.2
36		New Roadway	Southwest Dr	US 277	New roadway based on public comment between Winters Fwy & Dub Wright Blvd	0.0	2.7	1.7	6.7	2.5	13.5
37		US 83 Frontage Rd	FM 707	Clark Rd	Add Frontage Roads	0.8	8.0	1.7	0.0	2.5	13.0

Table 33: Funded Projects

Location	From	To	Work Description	Construction Cost	MPO Funding (Cat 2U)	Year of Expense	Local ID	CSJ (control Section Job)	Controlling Project ID	Status	Total Cost*	Project Ranking	Map #	PM#
US 83/84 Frontage	North of FM 707	Near Antilley Rd	Add Frontage Rd at US 83/84 Connecting to FM 707 to Antilley Rd	\$ 7,000,001	\$ 3,500,000	2020	S083-E23-CA	0034-01-127		Plans under construction (planned let Aug 1, 2020)	\$ 7,290,471	24	1	PM 3
US 83	1.0 miles north of FM 3034	Taylor County Line	Construct New Overpass	\$ 10,520,000	\$ -	2024	S0083-B2-OI	0033-05-089	0033-05-089	Plans under construction (planned let February 1, 2024)	\$ 12,781,870	13	2	PM 1 PM 2
US 83	Jones County Line	Near W. Summit Rd	Construct New Overpass	\$ 3,000,000	\$ -	2024	S0083-B2-OI	0033-06-121	0033-05-089	Plans under construction (planned let February 1, 2024)	\$ 3,651,418	13	2	PM 1 PM 2
FM 89 (Buffalo Gap Rd)	Rebecca Ln	Just North of US 83/84	Access Management/Intersection Improvements	\$ 12,775,001	\$ 12,775,000	2021	S0089-3-CA	0699-01-052	0699-01-052	Plans under construction (planned let August 1, 2021)	\$ 17,319,993	3	3	PM 1 PM 2 PM 3
FM 89 (Buffalo Gap Rd)	Near Bettles Ln	Rebecca Ln	Access Management	\$ 10,970,001	\$ 10,970,000	2021	S0089-C1-CA	0699-01-051	0699-01-052	Plans under construction (planned let August 1, 2021)	\$ 12,447,992	5	4	PM 1 PM 2 PM 3
FM 3034	US 83	FM 600	Rehab and Widen	\$ 2,600,000	\$ 2,600,000	2024	S3034-E22-RM	3068-01-012 & 3068-01-015	0033-05-089	Plans under construction (planned let February 1, 2024)	\$ 2,942,666	29	5	PM 2
FM 89 (Buffalo Gap Rd)	Antilley Rd Intersection		Lower Profile/Intersection Improvements	\$ 2,000,000	\$ 2,000,000	2030-2045	S0089-E21-RM	0699-01-056		Long Range Plan	\$ 2,200,000	12	6	PM 1 PM 2 PM 3
IH 20	SH 351	Callahan County Line	Add two main lanes for a six lane freeway and replace overpass structures	\$ 127,500,000	\$ -	2028	S020-E24-CA	0006-06-081		Environmental Review (planned let June 1, 2028) combined S020-E28-CA	\$ 162,335,040	7	7	PM 1 PM 2 PM 3
IH 20	Judge Ely Blvd	SH 351	Add two main lanes for a six lane freeway and construct overpass structures	\$ 67,199,999	\$ 20,000,000	2026	S020-E25-CA	0006-06-109		Environmental Review (planned let June 1, 2026)	\$ 79,670,999	1	8	PM 1 PM 2 PM 3
FM 707	FM 89 (Buffalo Gap Rd)	US 83	Rehab and widen Roadway	\$ 7,840,000	\$ 7,840,000	2025	S0707-F1-CA	0663-01-024		Let date 8-1-25	\$ 16,206,697	10	9	PM 1 PM 3
FM 707	US 83/84	FM 1750 (Oldham Ln)	Widen to 4 Lanes with Center Turn Lane and intersection improvements at FM 1750	\$ 10,400,000	\$ 8,060,000	2029	S0707-F2-CA				\$ 16,360,619	16	10	PM 1 PM 3
E N 10th St	Griffith Rd	Loop 322	Widen to 4 lanes and include turn lanes	\$ 5,400,000	\$ -	2020-2029	AEN10-1-CA			Local Project	\$ 5,400,000	25	11	N/A
Hartford	at Little Elm Creek		Bridge to Replace Low Crossing	\$ 1,000,000	\$ -	2020-2029	AHRT-1-BR			Local Project	\$ 1,000,000	14	12	N/A
Maple St	S 11th St	S 27th St	Widen to 4 lanes and include turn lanes	\$ 7,400,000	\$ -	2020-2029	AMAPL-2-CA			Local Project	\$ 7,400,000	20	13	N/A
Maple St	S 27th St	Industrial Blvd	Widen to 4 lanes and include turn lanes	\$ 3,600,000	\$ -	2020-2029	AMAPL-3-CA			Local Project	\$ 3,600,000	22	14	N/A
Maple St	Industrial Blvd	Loop 322	Widen to 4 lanes and include turn lanes	\$ 3,600,000	\$ -	2020-2029	AMAPL-4-CA			Local Project	\$ 3,600,000	18	15	N/A
Maple St	County Rd 111-1 (Colony Hill Rd)	FM 707	Widen to 4 lanes and include turn lanes	\$ 4,800,000	\$ -	2020-2029	AMAPL-5-CA			Local Project	\$ 4,800,000	15	16	N/A
Marigold St	FM 3438 (Arnold Blvd)	Wall St	Rehabilitate, Add Bridge, Shoulders and Turn Lanes	\$ 1,500,000	\$ -	2020-2029	AN010-D2-OI			Local Project	\$ 1,500,000	23	17	N/A
IH 20	Near Catclaw Creek	SH 351	Add two main lanes for a six lane freeway and replace overpass structures	\$ 212,500,000	\$ 20,000,000	2029	S020-E26-CA	0006-06-105		Environmental Review (planned let May 1, 2029)	\$ 270,558,400	2	18	PM 1 PM 2 PM 3
IH 20	Abilene West City Limits	Near Catclaw Creek	Add two main lanes for a six lane freeway and replace overpass structures	\$ 212,500,000	\$ 30,000,000	2031	S020-E27-CA	0006-05-090		Environmental Review (planned let April 1, 2031)	\$ 270,558,400	8	19	PM 1 PM 2 PM 3
US 83/84	S 7th St	N 10th St	Add 2 Main Lanes and Replace Overpass Structures	\$ 60,000,000	\$ 10,000,000	2030-2045	S0083-B3-CA			Long Range Plan	\$ 98,037,488	4	20	PM 1 PM 2 PM 3
US 83/84	N 10th St	IH 20	Add 2 Main Lanes and Replace Overpass Structures	\$ 40,000,000	\$ 10,000,000	2030-2045	S0083-E7-CA			Long Range Plan	\$ 65,358,325	9	21	PM 1 PM 2 PM 3
IH 20	MPO East Boundary	East of Loop 322	Add 2 Main Lanes and Replace Overpass Structures	\$ 60,000,000	\$ 20,000,000	2030-2045	S020-E28-CA	0006-06-081		Long Range Plan	\$ 98,037,488	11	22	PM 1 PM 2 PM 3
Business I-20	Loop 322	Elmdale Rd	Rehabilitate , Add Shoulders, & Turn Lanes	\$ 5,200,000	\$ 5,200,000	2030-2045	SB120-C1-RM			Long Range Plan	\$ 8,236,582	17	23	PM 1 PM 2 PM 3
Loop 322	IH 20	SH 351	Construct New 2 Lane Highway of Future 4 Lanes with Access Control	\$ 45,400,000	\$ -	2030-2045	S0322-B1 (C2)-CA			Long Range Plan	\$ 71,911,699	33	24	PM 3
FM 1082	West of Cheyenne Creek Road	East of Dam	New Roadway north of FM 1082	\$ 7,000,000	\$ 3,000,000	2023	S1082-F7-CA	0972-03-021		Local Project	\$ 8,581,376	27.5	38	PM 1 PM 2
				\$ 931,705,002										
* Total Cost includes construction cost, preliminary engineering, right-of-way purchase, and inflation for projects starting at or later than 2025														

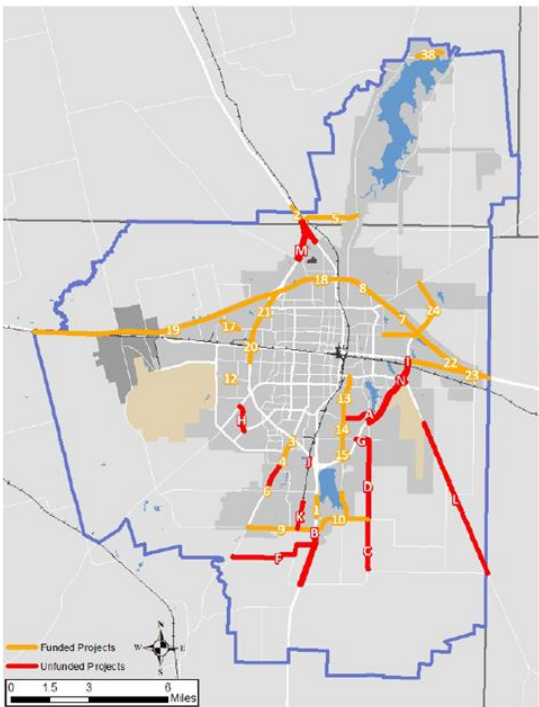


Figure 46: Funded and Illustrative Projects Map

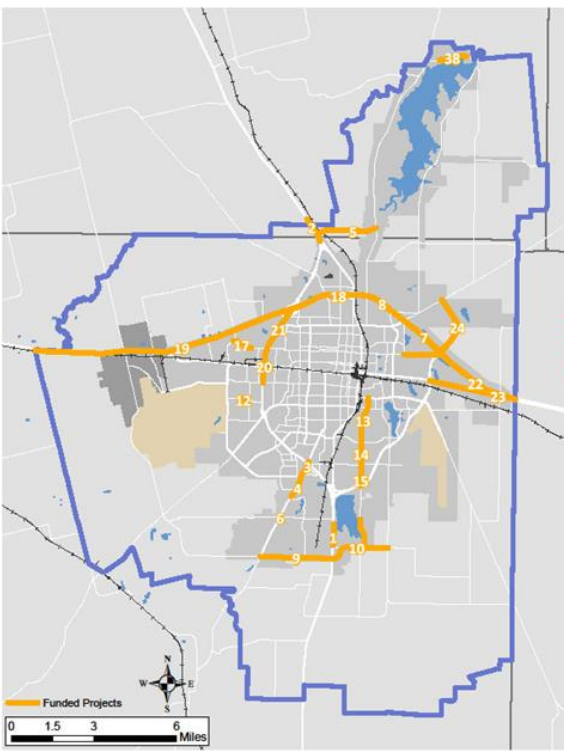
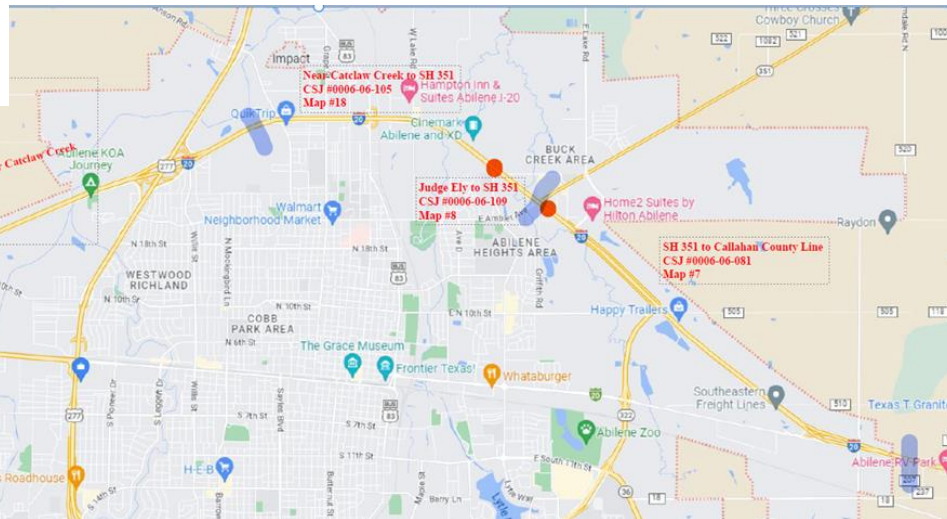


Figure 47: Funded Projects Map



Remove Number 22 from Figure 46 & 47 Maps

Projects 11, 16 and E (numbers and letters need to be added to map).

Table 34: Illustrative Projects

Location	From	To	Work Description	Construction Cost	MPO Funding (Cat 2U)	Year of Expense	Local ID	Project Ranking	Map #
E S 27th St	Maple St	FM 1750 (Oldham Ln)	Widen to 4 Lanes with Center Turn Lane	\$ 4,700,000	\$ -	Future	AES27-2-CA	28	A
US 83 Frontage Rd	FM 707	FM 204 (Clark Rd)	Add Frontage Roads	\$ 13,600,000	\$ -	Future	S0083-F3-CA	37	B
FM 1750 (Oldham Ln)	0.5 Miles South of FM 707	FM 204 (Clark Rd)	Widen to 4 Lanes	\$ 6,500,000	\$ -	Future	S1750-E5-CA	30	C
FM 1750 (Oldham Ln)	Industrial Blvd	0.5 Miles South of FM 707	Widen to 4 Lanes	\$ 15,800,000	\$ -	Future	S1750-C1-CA	32	D
FM 89 (Buffalo Gap Rd)	South of Chimney Rock Rd	South of Antilley Rd	Widen to 6 Lanes with Access Control	\$ 5,000,000	\$ -	Future	S0089-C2-CA	6	E
Iberis (CR 164 & CR 338)	US 83/84	FM 89 (Buffalo Gap Rd)	Rehabilitate, Add Shoulders	\$ 7,100,000	\$ -	Future	CIBER-E19-RM	31	F
Industrial Blvd	Loop 322	FM 1750 (Oldham Ln)	Widen to 4 Lanes with Center Turn Lane	\$ 2,300,000	\$ -	Future	AINDU-2-CA	27	G
New Roadway	Southwest Dr	US 277	New roadway based on public comment between Winters Fwy & Dub Wright Blvd	\$ 4,500,000	\$ -	Future	AXXX-F4-CA	36	H
Loop 322 Frontage Rd	FM 1750 (Oldham Ln)	Business I-20	Operational Improvements	\$ 18,000,000	\$ -	Future	S322-E28-OI	19	I
Memorial Dr	Preston Trail	US 83/84	Extend roadway (Public Comment)	\$ 1,300,000	\$ -	Future	AMEMO-F5-CA	34	J
Memorial Dr	Ridge Crossing	FM 707	Extend roadway (Public Comment)	\$ 4,700,000	\$ -	Future	AMEMO-F6-CA	35	K
SH 36	1.2 Miles South of FM 18 (Old Clyde Rd)	FM 1750 (Oldham Ln)	Widen to 4 Lanes	\$ 27,900,000	\$ -	Future	S0036-1-CA	21	L
US 83 Frontage Rd	FM 2404 (Old Anson Rd)	FM 3034	Change Frontage Road Operations	\$ 12,000,000	\$ -	Future	S0083-C1-OI	26	M
Loop 322	SH 36	SH 36	Intersection Improvements	TBD	\$ -	Future	S0322-F8-OI	11.5	N

Table 35: Grouped Projects

Location	From	To	Work Description	Total Cost Pre Inflation	Year of Expense	Total Project Cost	Local ID	
Local Govt. Roads	Various Locatons		Routine (Preventive) Maintenance	Grouped Project Over Multiple Years	2020 - 2029	\$24,964,185	LVARI-XSR-PM	Short-Term 2020-2029
Local Govt. Roads	Various Locatons		Rehabilitate or Reconstruct Existing Roads	Grouped Project Over Multiple Years	2020 - 2029	\$17,857,795	LVARI-XSR-PM	
Local Govt. Roads	Various Locatons		Various Off-Pavement Improvements (Signs, Signals, Landscaping, Drainage Imps, ETC.)	Grouped Project Over Multiple Years	2020 - 2029	\$10,830,000	LVARI-XSR-MS	
State System	Various Locatons		Routine (Preventive) Maintenance	Grouped Project Over Multiple Years	2020 - 2029	\$15,896,460	SVARI-XSR-PM	
State System	Various Locatons		Rehabilitate or Reconstruct Existing State Roads With Baseline Funds	Grouped Project Over Multiple Years	2020 - 2029	\$29,000,777	SVARI-XSR-RM	
State System	Various Locatons		Various Off-Pavement Improvements (Signs, Signals, Landscaping, Drainage Imps, ETC.)	Grouped Project Over Multiple Years	2020 - 2029	\$3,304,922	SVARI-XSR-MS	
Local Govt./ State Roads/ Off Roadway Facilities	Various Locatons		Pedestrian and Bikeway Improvements	Grouped Project Over Multiple Years	2020 - 2029	\$13,308,000	MVAR-XSR-BP	
Local Govt./ State Roads/ Off Roadway Facilities	Various Locatons		Non Ped/Bike Transportation Alternatives Type Projects	Grouped Project Over Multiple Years	2020 - 2029	\$2,000,000	MVAR-XSR-MS	
Local Match	Various Locatons		Local Match For Statewide Program (Bridge, Enhancement, SRTS, ETC.) Projects Off State System	Grouped Project Over Multiple Years	2020 - 2029	\$2,449,280	LMATC-XSR-MS	
Bridge Replacement and Rehabilitation	Various Locatons		Projects to replace and/or rehabilitate functionally obsolete or structurally deficient bridges.	Grouped Project Over Multiple Years	2020 - 2029	TBD	MVARI-XSR-BR	
Local Govt. Roads	Various Locatons		Routine (Preventive) Maintenance	Grouped Project Over Multiple Years	2030- 2045	\$27,460,604	LVARI-XLR-PM	Long-Term 2030-2045
Local Govt. Roads	Various Locatons		Rehabilitate or Reconstruct Existing Roads	Grouped Project Over Multiple Years	2030- 2045	\$9,153,535	LVARI-XLR-RM	
Local Govt. Roads	Various Locatons		Various Off-Pavement Improvements (Signs, Signals, Landscaping, Drainage Imps, ETC.)	Grouped Project Over Multiple Years	2030- 2045	\$990,000	LVARI-XLR-MS	
State System	Various Locatons		Routine (Preventive) Maintenance	Grouped Project Over Multiple Years	2030- 2045	\$17,486,106	SVARI-XLR-PM	
State System	Various Locatons		Rehabilitate or Reconstruct Existing State Roads With Baseline Funds	Grouped Project Over Multiple Years	2030- 2045	\$29,000,777	SVARI-XLR-RM	
State System	Various Locatons		Various Off-Pavement Improvements (Signs, Signals, Landscaping, Drainage Imps, ETC.)	Grouped Project Over Multiple Years	2030- 2045	\$3,635,414	SVARI-XLR-MS	
Local Govt./ State Roads/ Off Roadway Facilities	Various Locatons		Pedestrian and Bikeway Improvements	Grouped Project Over Multiple Years	2030- 2045	\$18,631,200	MVARI-XLR-BP	
Local Govt./ State Roads/ Off Roadway Facilities	Various Locatons		Non Ped/Bike Transportation Alternatives Type Projects	Grouped Project Over Multiple Years	2030- 2045	\$3,000,000	MVARI-XLR-MS	
Local Match	Various Locatons		Local Match For Statewide Program (Bridge, Enhancement, SRTS, ETC.) Projects Off State System	Grouped Project Over Multiple Years	2030- 2045	\$3,460,992	LMATC-XLR-MS	
Bridge Replacement and Rehabilitation	Various Locatons		Projects to replace and/or rehabilitate functionally obsolete or structurally deficient bridges.	Grouped Project Over Multiple Years	2030- 2045	TBD	MVARI-XLR-BR	
Grouped Projects using baseline revenue and local Funding, Total				\$0		\$232,430,047		
Projects using baseline revenue and local funding (Previous Page), Total				\$0		\$ 931,705,002		
Combined total of projects and grouped projects using baseline revenue and local funding, total				\$0		\$1,164,135,049		

Action Requested

1. Any suggestions, deletions, or additions.
2. Approval of the amendment to the FYs 2020-2045 Metropolitan Transportation Plan (MTP).

6. Receive a Report, Hold a Discussion and Public Hearing, and Take Action on an amendment to the MPO Ten-Year Plan.

Background

On June 21, 2016 the Policy Board adopted a listing of 20 projects for future funding. The list was not prioritized except for FM 89 projects #1 and #2 as well as FM 3034 which had been validated as the top three projects. The Abilene MPO receives funding through the Category 2 (Metro and Urban Area Corridor Projects) formula distribution. According to TxDOT's formula this category is for "mobility and added capacity projects along a corridor that improve transportation facilities in order to decrease travel time and level or duration of traffic congestion and safety, maintenance, or rehabilitation projects that increase the safe and efficient movement of people and freight in metropolitan and urbanized areas". On June 3, 2015 the HB 20 legislation was passed. House Bill 20 amends the Transportation Code to require the Texas Transportation Commission to develop and implement a performance-based planning and programming process that includes certain performance metrics and measures. The bill requires each planning organization to develop a Ten-Year Plan and project recommendation criteria and provides for the prioritization and approval of recommended projects by the commission.

The Abilene MPO Project Selection Committee met on November 15, 2016 to discuss how to prioritize the listing of 20 projects that the Policy Board approved on June 21, 2016. This prioritized list was presented to the Technical Advisory Committee at their November 29, 2016 meeting. The Policy Board approved this document called the Ten-Year Plan at their December 12, 2016 meeting. In order to capture project situations and to ensure that projects are ready to move forward in the projected phases the Ten-Year Plan was amended on June 20, 2017, December 19, 2017, June 19, 2018, December 17, 2019, and December 14, 2021.

Current Situation

As part of the process of changes to the Metropolitan Transportation Plan (MTP) and the Transportation Improvement Program (TIP), the Ten-Year Plan also needs to be updated.

Recommendation from the Technical Advisory Committee (TAC)

The TAC at their February 7, 2023 meeting recommended approval to the Policy Board on the amendment to the MPO Ten-Year Plan as presented.

MPO Ten-Year Plan (continued)

FUNDING YEAR								FY 2015	FY 2016	FY 2017	FY 2018	FY 2019	FY 2020	FY 2021	FY 2022
PROJECTED FUNDING	Proposition 1 and Proposition 7 (State Funding)							\$ 3,984,000	\$ 2,920,000	\$ 1,520,000	\$ 3,420,000	\$ 10,290,000	\$ 9,750,000	\$ 3,000,416	\$ 6,383,527
REMAINING BALANCE								\$ -	\$ (3,000)	\$ (10,000)	\$ (2,200,000)	\$ 10,290,000	\$ 6,250,000	\$ (20,744,584)	\$ 6,383,527
RUNNING BALANCE									\$ (3,000)	\$ (13,000)	\$ (2,213,000)	\$ 8,077,000	\$ 14,327,000	\$ (6,417,584)	\$ (34,057)
PROJECT	LIMITS	TYPE OF WORK	MPO PROJECT #	CSJ #	ESTIMATED LET DATE	TOTAL PROJECT COST	ESTIMATED PROJECT CONSTRUCTION COST								
SH 351	I20 TO CITY LIMITS	INSTALL RAISED MEDIAN, DRAINAGE, SIDEWALK, TRAFFIC SIGNAL UPGRADES	S0351-D1-OI	CSJ 0011-01-030	03/01/2015	\$ 6,200,001	\$ 6,000,001	\$ 3,984,000							
US 83D (TREADAWAY ROAD)	I20 TO HILL STREET	REHABILITATION, BRIDGE RAIL AND METAL BEAM GUARD FENCE, RUMBLE STRIPS	SVARI-XSR-RM	CSJ 0033-08-038	04/01/2016	\$ 8,722,452	\$ 8,722,452		\$ 2,923,000	\$ 1,530,000					
SL 322	SH 36 to Lytle Creek	Exit Ramp Relocation		CSJ 2398-01-051	01/01/2018	\$ 800,000	\$ 800,000				\$ 500,000				
US 83	SOUTH OF FM 204 (CLARK/REMINGTON ROAD) TO FM 707	CONSTRUCT OVERPASS AND RELOCATE RAMPS	S0083-C5-01	CSJ 0034-01-126	08/01/2018	\$ 16,237,428	\$ 15,500,000				\$ 5,120,000				
US 277/US 83	US 83/84 TO CATCLAW ROAD TO US 277 TO TEXAS AVENUE	CONSTRUCT SIDEWALKS, SIGNAL ENHANCEMENTS, AND ADA RAMPS	MVAR-XSR-BP	CSJ 0908-33-099	08/01/2020	\$ 916,200	\$ 876,747						\$ -		
US 83 Frontage	FM 707 TO ANTILLEY ROAD	ADD FRONTAGE ROAD	S083-E23-CA	CSJ 0034-01-127	08/01/2020	\$ 7,290,471	\$ 7,000,001						\$ 3,500,000		
FARM TO MARKET 89 (BUFFALO GAP ROAD) Phase I	REBECCA LANE TO JUST NORTH OF US 83	ACCESS MANAGEMENT AND INTERSECTION IMPROVEMENTS	S0089-3-CA	CSJ 0699-01-052	08/01/2021	\$ 17,319,993	\$ 12,775,001							\$ 12,775,000	
FARM TO MARKET 89 (BUFFALO GAP ROAD) Phase II	NEAR BETTES LANE TO REBECCA LANE	ACCESS MANAGEMENT	S0089-C1-CA	CSJ 0699-01-051 under CSJ 0699-01-052	08/01/2021	\$ 12,447,992	\$ 10,970,001							\$ 10,970,000	
TOTALS CURRENT PROJECTS							\$ 56,644,202	\$ 3,984,000	\$ 2,923,000	\$ 1,530,000	\$ 5,620,000	\$ -	\$ 3,500,000	\$ 23,745,000	

ABILENE METROPOLITAN PLANNING ORGANIZATION																					
10 YEAR PLAN																					
FUNDING YEAR								FY 2023	FY 2024	FY 2025	FY 2026	FY 2027	FY 2028	FY 2029	FY 2030	FY 2031	FY 2031	TOTAL			01/27/2023
PROJECTED FUNDING	Proposition 1 and Proposition 7 (State Funding)							\$ 13,362,716	\$ 4,936,504	\$ 5,657,441	\$ 5,202,202	\$ 5,551,490	\$ 5,142,531	\$ 4,354,283	\$ 5,492,549	\$ 5,047,621	\$ 4,250,664	\$ 58,998,001	Based on UTP FY 2023 Funding		
REMAINING BALANCE								\$ 10,362,716	\$ 2,336,504	\$ (2,182,559)	\$ (14,797,798)	\$ 5,551,490	\$ 5,142,531	\$ 4,354,283	\$ 5,492,549	\$ 5,047,621	\$ 4,250,664	\$ 25,558,001			
RUNNING BALANCE								\$ 10,328,659	\$ 12,665,163	\$ 10,482,604	\$ (4,315,194)	\$ 1,236,296	\$ 6,378,827	\$ 10,733,110	\$ 16,225,659	\$ 21,273,280	\$ 25,523,944				
PROJECT	LIMITS	TYPE OF WORK	MPO PROJECT #	CSJ #	ESTIMATED LET DATE	TOTAL PROJECT COST	ESTIMATED PROJECT CONSTRUCTION COST											MPO FUNDS	TXDOT FUNDS	OTHER FUNDS	TOTAL PROJECT COST
FM 1082	WEST OF CHEYENNE CREEK ROAD TO EAST OF DAM	NEW ROADWAY	S1082-F7-CA	CSJ #0972-03-021	08/02/2023	\$ 8,581,376	\$ 7,000,000	\$ 3,000,000										\$ 3,000,000	\$ 1,000,000	\$ 3,000,000	\$ 7,000,000
FM 3034	US 83 TO FM 600 (Near FH-343)	REHAB AND WIDEN	S3034-E22-RM	CSJ #3068-01-012 & 3068-01-015 under CSJ #0033-05-089	02/01/2024	\$ 2,942,666.00	\$ 2,600,000	\$ -	\$ 2,600,000									\$ 2,600,000	\$ 1		\$ 2,600,001
US 83	1.0 MILES NORTH OF FM 3034 TO TAYLOR COUNTY LINE	CONSTRUCT NEW OVERPASS	S0083-B2-01	CSJ #0033-05-089	02/01/2024	\$ 12,781,870.00	\$ 10,520,000		\$ -									\$ -	\$ 10,520,000		\$ 10,520,000
US 83	JONES COUNTY LINE TO NEAR W. SUMMIT RD	CONSTRUCT NEW OVERPASS	S0083-B2-01	CSJ #0033-06-121 UNDER CSJ #0033-05-089	02/01/2024	\$ 3,651,418.00	\$ 3,000,000		\$ -									\$ -	\$ 3,000,000		\$ 3,000,000
FM 707	FM 89 (BUFFALO GAP ROAD) TO US 83	REHAB AND WIDEN ROADWAY	SO707-C1-CA	CSJ #0663-01-024	08/01/2025	\$ 16,206,697.00	\$ 7,840,000			\$ 7,840,000								\$ 7,840,000	\$ 1		\$ 7,840,001
IH 20	JUDGE ELY BLVD TO SH 351	ADD TWO MAIN LANES FOR A SIX LANE FREEWAY AND CONSTRUCT OVERPASS STRUCTURES.	S020-E25-CA	CSJ #0006-06-109	06/01/2026	\$ 79,670,999.00	\$ 67,199,999				\$ 20,000,000							\$ 20,000,000	\$ 47,199,999		\$ 67,199,999
IH 20	SH 351 TO CALLAHAN COUNTY LINE	ADD TWO MAIN LANES FOR A SIX LANE FREEWAY AND CONSTRUCT OVERPASS STRUCTURES.	S020-E24-CA	CSJ #0006-06-081	06/01/2028	\$ 162,335,040.00	\$ 127,500,000						\$ -					\$ -	\$ 127,500,000		\$ 127,500,000
IH 20	NEAR CATCLAW CREEK TO SH 351	ADD TWO MAIN LANES FOR A SIX LANE FREEWAY AND REPLACE OVERPASS STRUCTURES.	S020-E26-CA	CSJ #0006-06-105	05/01/2029	\$ 270,558,400.00	\$ 212,500,000							\$ -							
IH 20	ABILENE WEST CITY LIMITS TO NEAR CATCLAW CREEK	ADD TWO MAIN LANES FOR A SIX LANE FREEWAY AND REPLACE OVERPASS STRUCTURES.	S020-E27-CA	CSJ #0006-05-090	04/01/2031	\$ 270,558,400.00	\$ 212,500,000									\$ -					
SOUTH 14TH ST WALKABILITY PROJECT	BARROW STREET TO PIONEER DRIVE	PEDESTRIAN IMPROVEMENTS	MVAR-XSR-BP		TBD		\$ 2,186,407											\$ -		\$ 2,186,407	\$ 2,186,407
FM 707	US 83/84 TO FM 1750 (OLDHAM LANE)	WIDEN TO 4 LANES WITH CENTER TURN LANE AND INTERSECTION IMPROVEMENTS AT FM 1750	S0707-F2-CA		TBD	\$ 16,360,619.00	\$ 10,400,000						\$ -					\$ -	\$ 10,400,000		\$ 10,400,000

2023 Unified Transportation Program (UTP) approved at Texas Transportation Commission on August 30, 2022 (Minute Number 116292)

TABLE 19
CATEGORY 2: METROPOLITAN AND URBAN CORRIDOR PROJECTS

DISTRICT/MPO/DIVISION/ PROGRAM	FY 2023	FY 2024	FY 2025	FY 2026	FY 2027	FY 2028	FY 2029	FY 2030	FY 2031	FY 2032	TOTAL
ABL - Abilene MPO	\$ 13,362,716	\$ 4,936,504	\$ 5,657,441	\$ 5,202,202	\$ 5,551,490	\$ 5,142,531	\$ 4,354,283	\$ 5,492,549	\$ 5,047,621	\$ 4,250,664	\$ 58,998,001

MPO Ten-Year Plan (continued)

PROJECT	LIMITS	TYPE OF WORK	MPO PROJECT #	CSJ #	ESTIMATED LET DATE	TOTAL PROJECT COST	ESTIMATED PROJECT CONSTRUCTION COST										MPO FUNDS	TXDOT FUNDS	OTHER FUNDS	TOTAL PROJECT COST
US 83/84	SOUTH 7TH ST. TO N 10TH ST	ADD 2 MAIN LANES AND REPLACE OVERPASS STRUCTURES	S0083-B3-CA		TBD	\$ 98,037,488	\$ 60,000,000													
US 83/84	N 10TH ST TO IH 20	ADD 2 MAIN LANES AND REPLACE OVERPASS STRUCTURES	S0083-E7-CA		TBD	\$ 65,358,325	\$ 40,000,000													
BUSINESS I-20	LOOP 322 TO ELMDALE RD	REHABILITATE, ADD SHOULDERS AND TURN LANES	SB120-C1-RM		TBD	\$ 8,236,582.00	\$ 5,200,000													
Loop 322	IH 20 TO SH 351	CONSTRUCT NEW 2 LANE HIGHWAY OF FUTURE 4 LANES WITH ACCESS CONTROL	S0322-B1 (C2)-CA		TBD	\$ 71,911,699.00	\$ 45,400,000													
FM 1750	SOUTH OF SL 322 TO FM 204	WIDEN ROADWAY			TBD		TBD										\$ -			\$ -
SL 322	SH 36	INTERSECTION IMPROVEMENT	S0322-F8-OI		TBD		TBD										\$ -			\$ -
FARM TO MARKET 89	ANTILLEY ROAD INTERSECTION	LOWER PROFILE AND OTHER IMPROVEMENT TO THE INTERSECTION	LVARI-XSR-MS and SVARI-XSR- MS	CSJ 0699-01-056 cancelled added CSJ 0699-01-063	TBD		\$ 2,000,000										\$ -	\$ -		\$ -
TOTAL FUTURE PROJECTS							\$ 815,846,406	\$ 3,000,000	\$ 2,600,000	\$ 7,840,000	\$ 20,000,000	\$ -	\$ -	\$ -	\$ -	\$ -	\$ 33,440,000	\$ 199,620,001	\$ 5,186,407	\$ 238,246,408

- Action Requested**
- Any suggestions, deletions, or additions.
 - Approval of the amendment to the 10-Year Plan.

ABILENE METROPOLITAN PLANNING ORGANIZATION																																																																																																																																																																																																																																																																																																																																																																																																																																																																																																																																																																																																																																																																																																																																																																																																																																																																																																																																																																																																																																																																																																																																																																																																																																																																																																																																																																																																		
10 YEAR PLAN																																																																																																																																																																																																																																																																																																																																																																																																																																																																																																																																																																																																																																																																																																																																																																																																																																																																																																																																																																																																																																																																																																																																																																																																																																																																																																																																																																																																		
FUNDING YEAR	Proposition 1 and Proposition 2 (State Funding)																																																																																																																																																																																																																																																																																																																																																																																																																																																																																																																																																																																																																																																																																																																																																																																																																																																																																																																																																																																																																																																																																																																																																																																																																																																																																																																																																																																																	



7. Receive a Report, Hold a Discussion and Public Hearing, and Take Action on an amendment to the FYs 2023-2026 Transportation Improvement Program (TIP).

Background

The Transportation Improvement Program (TIP) is the programming document for transportation projects in our area. The TIP identifies the projects from our long-range “Metropolitan Transportation Plan” (MTP) that are being worked on during this time span. The TIP is mandated by the metropolitan planning requirements set forth by Title 23, Code of Federal Regulations (CFR), Part 450, Subpart C, §324, which states that the MPO, in cooperation with the State and any affected public transportation operator(s), shall develop a Transportation Improvement Program (TIP) for the metropolitan planning area. The TIP shall cover a period of no less than four years, be updated at least every four years, and be approved by the MPO and the Governor or his designee.

The draft was presented to the Policy Board at the February 15, 2022 meeting. A Public Notice was published in the March 9, 2022 Abilene Reporter-News announcing that the draft FYs 2023-2026 Transportation Improvement Program (TIP) was available for public review through March 20, 2022 until 5:00 pm. The TIP was approved at the April 19, 2022 Policy Board meeting. On November 2, 2022, the TIP was administratively amended. This will be the second amendment to the document.

Current Situation

The TIP needs to be amended due to changes in project scope, funding, and total project cost information.

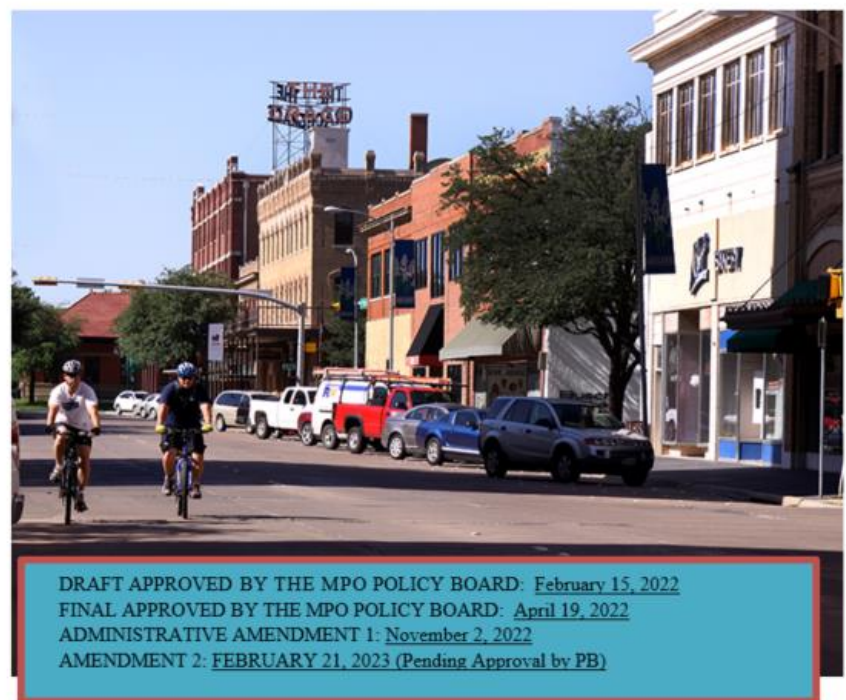
Recommendation from the Technical Advisory Committee (TAC)

The TAC at their February 7, 2023 meeting recommended approval to the Policy Board on the amendment to the FYs 2023-2026 Transportation Improvement Program (TIP) as presented.



TRANSPORTATION IMPROVEMENT PROGRAM

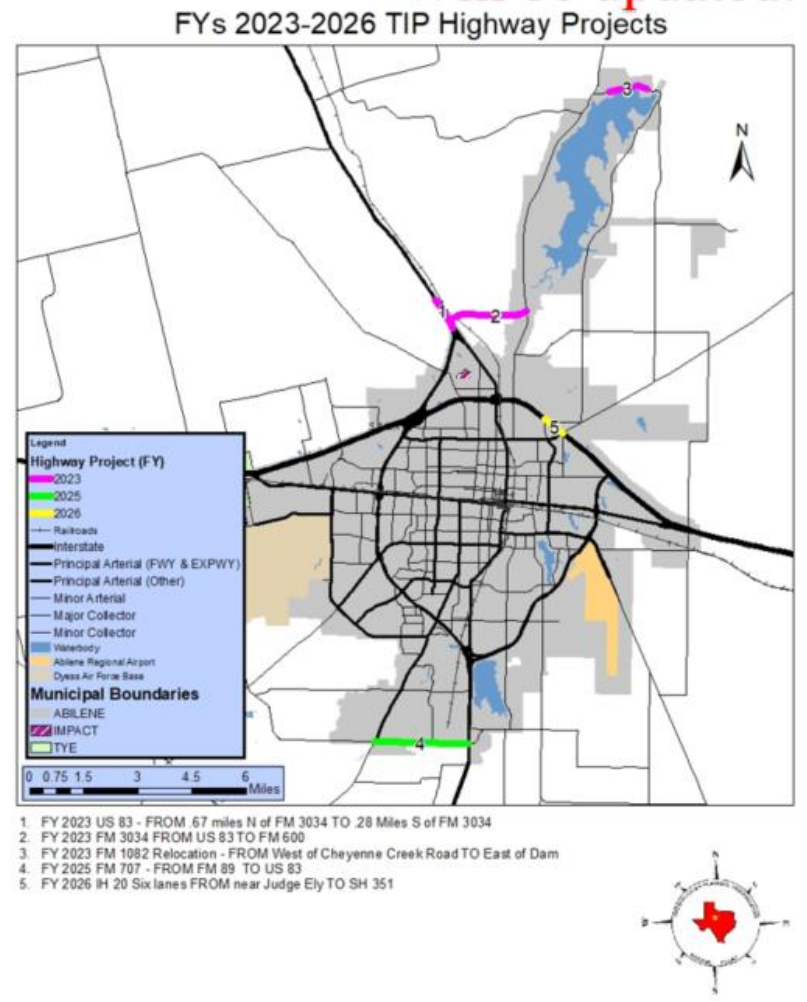
FISCAL YEARS 2023-2026



DRAFT APPROVED BY THE MPO POLICY BOARD: [February 15, 2022](#)
FINAL APPROVED BY THE MPO POLICY BOARD: [April 19, 2022](#)
ADMINISTRATIVE AMENDMENT 1: [November 2, 2022](#)
AMENDMENT 2: [FEBRUARY 21, 2023 \(Pending Approval by PB\)](#)

FUNDED HIGHWAY PROJECTS MAP

Will be updated.



Abilene Metropolitan Planning Organization								
FY 2023-2026 Transportation Improvement Program								
Highway Projects FY 2023								
DISTRICT	COUNTY	CSJ	HWY	PHASE	CITY	PROJECT SPONSOR	YOE COST	
Abilene	Jones	0972-03-021	FM 1082	Construction	Abilene	TxDOT/MPO/CoA	\$ 7,000,000.00	
LIMITS FROM:	West of Cheyenne Creek Road					REVISION DATE:	05/23	
LIMITS TO:	East of Dam					MPO PROJ. NUM:	S1082-F7-CA	
PROJECT:	FM 1082 Relocate Dam Road Jones Co.					FUNDING CAT(S):	2U, 11, 3	
DESCRIPTION:	RELOCATE FM 1082 AT FT PHANTOM DAM							
REMARKS:	Estimated let date 08/2023				PROJECT HISTORY:	Project Created in Amendment #5, Funding adjusted in FY 2023-2026 TIP, TPC & Let date (01/23) adjusted 05/23		
P7:								
TOTAL PROJECT COST INFORMATION			AUTHORIZED FUNDING BY CATEGORY/SHARE					
PRELIMINARY ENG:	\$ 362,482.40	COST OF APPROVED PHASES		FEDERAL	STATE	LOCAL	LC	TOTAL
ROW PURCHASE:	\$ 1,723,700.00		CAT 2U:	\$ 2,400,000.00	\$ 600,000.00			\$ 3,000,000.00
CONST COST:	\$ 7,000,000.00		CAT 11:	\$ 800,000.00	\$ 200,000.00			\$ 1,000,000.00
CONST ENG:	\$ 483,063.28		CAT 3:				\$ 3,000,000.00	\$ 3,000,000.00
CONTINGENCIES:	\$ 397,600.00							
INDIRECT COSTS:	\$ 214,530.40	\$ 7,000,000.00						
BOND FINANCING			TOTAL:	\$ 3,200,000.00	\$ 800,000.00	\$ -	\$ 3,000,000.00	\$ 7,000,000.00
PT CHG ORD:								
TOTAL PROJECT COST:	\$ 10,181,376.08							

Abilene Metropolitan Planning Organization								
FY 2023-2026 Transportation Improvement Program								
Highway Projects FY 2024								
DISTRICT	COUNTY	CSJ	HWY	PHASE	CITY	PROJECT SPONSOR	YOE COST	
Abilene	Jones	3068-01-012	FM 3034	Construction	Abilene	MPO	\$ 2,600,000.00	
LIMITS FROM:	US 83					REVISION DATE:	05/23	
LIMITS TO:	Near PR 343					MPO PROJ. NUM:	S3034-E22-RM	
PROJECT:	FM 3034 US 83 to FM 600					FUNDING CAT(S):	2U	
DESCRIPTION:	Rehab and widen (add shoulders)							
REMARKS:	Estimated let date 02/2024, Ctrl CSJ #0033-05-089				PROJECT HISTORY:	Revised 07/2024 to match project cost, 11 FYs 2019-2022, Chg FY from 2021 to 2022 amend #1, (Moved from 2022 to 2023 Amendment #3) Controlling Project ID 0033-05-089 Funding adjusted in FY 2023-2026 TIP, Moved to 2024 & Let Date chg 08/2023		
P7:								
TOTAL PROJECT COST INFORMATION			AUTHORIZED FUNDING BY CATEGORY/SHARE					
PRELIMINARY ENG:	\$ 127,522.50	COST OF APPROVED PHASES		FEDERAL	STATE	LOCAL	LC	TOTAL
ROW PURCHASE:	\$ -		CAT 2U:	\$ 2,080,000.00	\$ 520,000.00	\$ -	\$ -	\$ 2,600,000.00
CONST COST:	\$ 2,600,000.00							
CONST ENG:	\$ 98,270.40							
CONTINGENCIES:	\$ 82,000.00		\$ 2,600,000.00					
INDIRECT COSTS:	\$ 60,378.00							
BOND FINANCING	\$ -		TOTAL:	\$ 2,080,000.00	\$ 520,000.00	\$ -	\$ -	\$ 2,600,000.00
PT CHG ORD:								
TOTAL PROJECT COST:	\$ 2,968,170.90							

Abilene Metropolitan Planning Organization								
FY 2023-2026 Transportation Improvement Program								
Highway Projects FY 2024								
DISTRICT	COUNTY	CSJ	HWY	PHASE	CITY	PROJECT SPONSOR	YOE COST	
Abilene	Jones	3068-01-015	FM 3034	Construction	Abilene	MPO	\$ 3,640,000.00	
LIMITS FROM:	Brick Road					REVISION DATE:	05/23	
LIMITS TO:	FM 600					MPO PROJ. NUM:	S3034-E22-RM	
PROJECT:	FM 3034 Jones County					FUNDING CAT(S):	2U	
DESCRIPTION:	Rehab Road							
REMARKS:	Estimated let date 01/2024, Ctrl CSJ #0033-05-089				PROJECT HISTORY:	Added 05/23 revision split CSJ #3068-01-012 (US 83 to FM600)		
P7:								
TOTAL PROJECT COST INFORMATION			AUTHORIZED FUNDING BY CATEGORY/SHARE					
PRELIMINARY ENG:	\$ 178,531.50	COST OF APPROVED PHASES		FEDERAL	STATE	LOCAL	LC	TOTAL
ROW PURCHASE:	\$ -		CAT 11:	\$ 2,912,000.00	\$ 728,000.00	\$ -	\$ -	\$ 3,640,000.00
CONST COST:	\$ 3,500,000.00		CAT 2U:	\$ -	\$ -	\$ -	\$ -	\$ -
CONST ENG:	\$ 171,973.20							
CONTINGENCIES:	\$ -							
INDIRECT COSTS:	\$ 105,661.50							
BOND FINANCING	\$ -		TOTAL:	\$ 2,912,000.00	\$ 728,000.00	\$ -	\$ -	\$ 3,640,000.00
PT CHG ORD:	\$ 143,500.00							
TOTAL PROJECT COST:	\$ 4,099,666.20							

Abilene Metropolitan Planning Organization								
FY 2023-2026 Transportation Improvement Program								
Highway Projects FY 2024								
DISTRICT	COUNTY	CSJ	HWY	PHASE	CITY	PROJECT SPONSOR	YOE COST	
Abilene	Jones	0033-05-089	US 83	Construction	Abilene	TxDOT	\$ 10,520,000.00	
LIMITS FROM:	1.0 miles north of FM 3034					REVISION DATE:	05/23	
LIMITS TO:	Taylor County Line					MPO PROJ. NUM:	S0083-B2-01	
PROJECT:	US 83 and FM 3034 Overpass Landfill Road					FUNDING CAT(S):	4	
DESCRIPTION:	Construct new overpass (2 Lanes each direction)							
REMARKS:	Estimated let date 02/2024				PROJECT HISTORY:	Revised 07/2020 total project cost, TIP FYs 2019-2022, chg FY from 2021 to 2022 amend #1, (Moved from 2022 to 2023 Amendment #3) Funding adjusted in FY 2023-2026 TIP,		
P7:						Moved to 2024		
TOTAL PROJECT COST INFORMATION			AUTHORIZED FUNDING BY CATEGORY/SHARE					
PRELIMINARY ENG:	\$ 528,808.00	COST OF APPROVED PHASES		FEDERAL	STATE	LOCAL	LC	TOTAL
ROW PURCHASE:	\$ -		CAT 4:	\$ 8,416,000.00	\$ 2,104,000.00	\$ -	\$ -	\$ 10,520,000.00
CONST COST:	\$ 10,520,000.00							
CONST ENG:	\$ 628,094.40							
CONTINGENCIES:	\$ 792,000.00		\$ 10,520,000.00					
INDIRECT COSTS:	\$ 312,968.00							
BOND FINANCING	\$ -		TOTAL:	\$ 8,416,000.00	\$ 2,104,000.00	\$ -	\$ -	\$ 10,520,000.00
PT CHG ORD:	\$ -							
TOTAL PROJECT COST:	\$ 12,781,870.40							

Abilene Metropolitan Planning Organization								
FY 2023-2026 Transportation Improvement Program								
Highway Projects FY 2024								
DISTRICT	COUNTY	CSJ	HWY	PHASE	CITY	PROJECT SPONSOR	YOE COST	
Abilene	Taylor	0033-06-121	US 83	Construction	Abilene	TxDOT	\$ 3,000,000.00	
LIMITS FROM:	Jones County Line					REVISION DATE:	05/23	
LIMITS TO:	Near W. Summit Rd.					MPO PROJ. NUM:	S0083-B2-01	
PROJECT:	US 83 and FM 3034 Overpass Landfill Road					FUNDING CAT(S):	4	
DESCRIPTION:	Construct new overpass (2 Lanes each direction)							
REMARKS:	Estimated let date 02/2024				PROJECT HISTORY:	Revised 07/2020 total project cost, TIP FYs 2019-2022, chg FY from 2021 to 2022 amend #1, (Moved from 2022 to 2023 Amendment #3) Funding adjusted in FY 2023-2026 TIP, Moved to 2024, split CSJ 0033-05-089 into 2 projects		
P7:								
TOTAL PROJECT COST INFORMATION			AUTHORIZED FUNDING BY CATEGORY/SHARE					
PRELIMINARY ENG:	\$ 158,642.40	COST OF APPROVED PHASES		FEDERAL	STATE	LOCAL	LC	TOTAL
ROW PURCHASE:	\$ -		CAT 4:	\$ 2,400,000.00	\$ 600,000.00	\$ -	\$ -	\$ 3,000,000.00
CONST COST:	\$ 3,000,000.00							
CONST ENG:	\$ 180,891.19							
CONTINGENCIES:	\$ 228,096.00		\$ 3,000,000.00					
INDIRECT COSTS:	\$ 90,134.78							
BOND FINANCING	\$ -		TOTAL:	\$ 2,400,000.00	\$ 600,000.00	\$ -	\$ -	\$ 3,000,000.00
PT CHG ORD:	\$ -							
TOTAL PROJECT COST:	\$ 3,657,764.37							

Abilene Metropolitan Planning Organization								
FY 2023-2026 Transportation Improvement Program								
Highway Projects FY 2025								
DISTRICT	COUNTY	CSJ	HWY	PHASE	CITY	PROJECT SPONSOR	YOE COST	
Abilene	Taylor	0663-01-024	FM 707	Construction		MPO/TxDOT	\$ 7,840,000.00	
LIMITS FROM:	FM 89 (Buffalo Gap Road)					REVISION DATE:	07/2022	
LIMITS TO:	US 83					MPO PROJ. NUM:	S0707-F1-CA	
PROJECT:	FM 707 FM 89 TO US 83					FUNDING CAT(S):	2U	
DESCRIPTION:	REHAB AND WIDEN ROADWAY							
REMARKS:	Estimated let date 08/2025				PROJECT HISTORY:	Added into FY 2023-2026 TIP		
P7:								
TOTAL PROJECT COST INFORMATION			AUTHORIZED FUNDING BY CATEGORY/SHARE					
PRELIMINARY ENG:	\$ 364,574.70	COST OF APPROVED PHASES		FEDERAL	STATE	LOCAL	LC	TOTAL
ROW PURCHASE:	\$ 6,904,100.00		CAT 2U:	\$ 6,272,000.00	\$ 1,568,000.00	\$ -	\$ -	\$ 7,840,000.00
CONST COST:	\$ 7,840,000.00							
CONST ENG:	\$ 441,953.82							
CONTINGENCIES:	\$ 440,300.00		\$ 7,840,000.00					
INDIRECT COSTS:	\$ 215,768.70							
BOND FINANCING	\$ -			TOTAL:	\$ 6,272,000.00	\$ 1,568,000.00	\$ -	\$ -
PT CHG ORD:	\$ -							
TOTAL PROJECT COST:	\$ 16,206,697.22							

Abilene Metropolitan Planning Organization								
FY 2023-2026 Transportation Improvement Program								
Highway Projects FY 2026								
DISTRICT	COUNTY	CSJ	HWY	PHASE	CITY	PROJECT SPONSOR	YOE COST	
Abilene	Taylor	0006-06-109	IH 20	Construction	Abilene	TxDOT/MPO	\$ 67,199,999.00	
LIMITS FROM:	Judge Ely Blvd					REVISION DATE:	07/2022	
LIMITS TO:	SH 351					MPO PROJ. NUM:	S020-E25-CA	
PROJECT:	IH 20 SIX LANES NEAR JUDGE ELY TO SH 351					FUNDING CAT(S):	12, 2U	
DESCRIPTION:	Add two main lanes for a six lane freeway and construct overpass structures							
REMARKS:	Estimated let date 06/2026				PROJECT HISTORY:	Added into FY 2023-2026 TIP (Partial Project from MTP - updated MTP 02/23)		
P7:								
TOTAL PROJECT COST INFORMATION			AUTHORIZED FUNDING BY CATEGORY/SHARE					
PRELIMINARY ENG:	\$ 3,123,750.00	COST OF APPROVED PHASES		FEDERAL	STATE	LOCAL	LC	TOTAL
ROW PURCHASE:			CAT 12:	\$ 37,759,999.20	\$ 9,439,999.80	\$ -	\$ -	\$ 47,199,999.00
CONST COST:	\$ 67,199,999.00		CAT 2U:	\$ 16,000,000.00	\$ 4,000,000.00	\$ -	\$ -	\$ 20,000,000.00
CONST ENG:	\$ 3,748,500.00							
CONTINGENCIES:	\$ 3,750,000.00							
INDIRECT COSTS:	\$ 1,848,750.00							
BOND FINANCING				TOTAL:	\$ 53,759,999.20	\$ 13,439,999.80	\$ -	\$ -
PT CHG ORD:								
TOTAL PROJECT COST:	\$ 79,670,999.00							

Table 1

GROUPED PROJECT CSJs

Definition of Grouped Projects for use in the STIP
Revised February 23, 2021

PROPOSED CSJ	GROUPED PROJECT CATEGORY	DEFINITION
5000-00-950	PE-Preliminary Engineering	Preliminary Engineering for any project except added capacity projects in a nonattainment area. Includes activities which do not involve or lead directly to construction, such as planning and research activities; grants for training; engineering to define the elements of a proposed action or alternatives so that social, economic, and environmental effects can be assessed.
5000-00-951	Right of Way	Right of Way acquisition for any project except added capacity projects in a nonattainment area. Includes relocation assistance, hardship acquisition and protective buying.
5000-00-952	Preventive Maintenance and Rehabilitation	Projects to include pavement repair to preserve existing pavement so that it may achieve its designed loading. Includes seal coats, overlays, resurfacing, restoration and rehabilitation done with existing ROW. Also includes modernization of a highway by reconstruction, adding shoulders or adding auxiliary lanes (e.g., parking, weaving, turning, climbing, passing, non-added capacity) or drainage improvements associated with rehabilitation [See Note 3].
5000-00-957		
5000-00-958		
5000-00-953	Bridge Replacement and Rehabilitation	Projects to replace and/or rehabilitate functionally obsolete or structurally deficient bridges.
5000-00-954	Railroad Grade Separations	Projects to construct or replace existing highway-railroad grade crossings and to rehabilitate and/or replace deficient railroad underpasses, resulting in no added capacity.
5800-00-950	Safety	Projects to include the construction or replacement/rehabilitation of guard rails, median barriers, crash cushions, pavement markings, skid treatments, medians, lighting improvements, highway signs, curb ramps, railroad/highway crossing warning devices, fencing, intersection improvements (e.g., turn lanes), signalization projects and interchange modifications. Also includes projects funded via the Federal Hazard Elimination Program, Federal Railroad Signal Safety Program, or Access Managements projects, except those that result in added capacity.

Table 1

GROUPED PROJECT CSJs

Definition of Grouped Projects for use in the STIP
Revised February 23, 2021

PROPOSED CSJ	GROUPED PROJECT CATEGORY	DEFINITION
5000-00-956	Landscaping	Project consisting of typical right-of-way landscape development, establishment and aesthetic improvements to include any associated erosion control and environmental mitigation activities.
5800-00-915	Intelligent Transportation System Deployment	Highway traffic operation improvement projects including the installation of ramp metering control devices, variable message signs, traffic monitoring equipment and projects in the Federal ITS/IHS programs.
5000-00-916	Bicycle and Pedestrian	Projects including bicycle and pedestrian lanes, paths and facilities (e.g., sidewalks, shared use paths, side paths, trails, bicycle boulevards, curb extensions, bicycle parking facilities, bikeshare facilities, etc.). Safe Routes to School non-infrastructure related activities (e.g. enforcement, tools, and education programs).
5000-00-917	Safety Rest Areas and Truck Weigh Stations	Construction and improvement of rest areas, and truck weigh stations.
5000-00-918	Transit Improvements and Programs	Projects include the construction and improvement of small passenger shelters and information kiosks. Also includes the construction and improvement of rail storage/maintenance facilities bus transfer facilities where minor amounts of additional land are required and there is not a substantial increase in the number of users. Also includes transit operating assistance, preventative maintenance of transit vehicles and facilities, acquisition of third-party transit services, and transit marketing, and mobility management/coordination. Additionally includes the purchase of new buses and rail cars to replace existing vehicles or for minor expansions of the fleet [See Note 4].
5000-00-919	Recreational Trails Program	Off-Highway Vehicle (OHV), Equestrian, Recreational Water/Paddling Trails and related facilities; Recreational Trails related education and safety programs.

Note 1: Projects eligible for grouping include associated project phases (Preliminary Engineering, Right-Of-Way and Construction).

Note 2: Projects funded with Congestion Mitigation Air Quality funding require a Federal eligibility determination, and are not approved to be grouped.

ABILENE MPO											
2023-2026 TRANSPORTATION IMPROVEMENT PROGRAM											
Funding by Category											
		FY 2023		FY 2024		FY 2025		FY 2026		Total FY 2023 - 2026	
Funding Category	Description	Programmed	Authorized	Programmed	Authorized	Programmed	Authorized	Programmed	Authorized	Programmed	Authorized
1	Preventive Maintenance and Rehabilitation	\$0	\$0	\$0	\$0	\$0	\$0	\$0	\$0	\$0	\$0
2M or 2U	Urban Area (Non- TMA) Corridor Projects	\$3,000,000	\$3,000,000	\$2,600,000	\$2,600,000	\$7,840,000	\$7,840,000	\$20,000,000	\$20,000,000	\$33,440,000	\$33,440,000
3	Non-Traditionally Funded Transportation Project	\$3,000,000	\$3,000,000	\$0	\$0	\$0	\$0	\$0	\$0	\$3,000,000	\$3,000,000
3DB	Design Build (DB)	\$0	\$0	\$0	\$0	\$0	\$0	\$0	\$0	\$0	\$0
4	Urban and Regional Connectivity	\$0	\$0	\$13,520,000	\$13,520,000	\$0	\$0	\$0	\$0	\$13,520,000	\$13,520,000
5	CMAQ	\$0	\$0	\$0	\$0	\$0	\$0	\$0	\$0	\$0	\$0
6	Structures - Bridge	\$0	\$0	\$0	\$0	\$0	\$0	\$0	\$0	\$0	\$0
7	Metro Mobility & Rehab	\$0	\$0	\$0	\$0	\$0	\$0	\$0	\$0	\$0	\$0
8	Safety	\$0	\$0	\$0	\$0	\$0	\$0	\$0	\$0	\$0	\$0
9	TAP Set-Aside Program	\$0	\$0	\$0	\$0	\$0	\$0	\$0	\$0	\$0	\$0
10	Supplemental Transportation	\$0	\$0	\$0	\$0	\$0	\$0	\$0	\$0	\$0	\$0
10 CBI	Corridor Border	\$0	\$0	\$0	\$0	\$0	\$0	\$0	\$0	\$0	\$0
11	District Discretionary	\$1,000,000	\$1,000,000	\$3,640,000	\$3,640,000	\$0	\$0	\$0	\$0	\$4,640,000	\$4,640,000
11	Energy Sector	\$0	\$0	\$0	\$0	\$0	\$0	\$0	\$0	\$0	\$0
12	Texas Clear Lanes	\$0	\$0	\$0	\$0	\$0	\$0	\$0	\$0	\$0	\$0
12	Strategic Priority	\$0	\$0	\$0	\$0	\$0	\$0	\$47,199,999	\$47,199,999	\$47,199,999	\$47,199,999
SW PE	Statewide Budget PE	\$0	\$0	\$0	\$0	\$0	\$0	\$0	\$0	\$0	\$0
SW ROW	Statewide Budget ROW	\$0	\$0	\$0	\$0	\$0	\$0	\$0	\$0	\$0	\$0
Total		\$7,000,000	\$7,000,000	\$19,760,000	\$19,760,000	\$7,840,000	\$7,840,000	\$67,199,999	\$67,199,999	\$101,799,999	\$101,799,999
Funding Participation Source											
Source		FY 2023	FY 2024	FY 2025	FY 2026	Total FY 23-26					
Federal		\$3,200,000	\$15,808,000	\$6,272,000	\$53,759,999	\$79,039,999					
State		\$800,000	\$3,952,000	\$1,568,000	\$13,440,000	\$19,760,000					
Local Match		\$0	\$0	\$0	\$0	\$0					
CAT 3 - Local Contributions (LC)		\$3,000,000	\$0	\$0	\$0	\$3,000,000					
CAT 3 - Prop 1		\$0	\$0	\$0	\$0	\$0					
CAT 3 - DB Grant		\$0	\$0	\$0	\$0	\$0					
CAT 3 - PTF		\$0	\$0	\$0	\$0	\$0					
CAT 3 - RTR		\$0	\$0	\$0	\$0	\$0					
CAT 3 - CRISI		\$0	\$0	\$0	\$0	\$0					
CAT 3 - Local Transit		\$0	\$0	\$0	\$0	\$0					
CAT 3 - TDC		\$0	\$0	\$0	\$0	\$0					
Statewide Budget PE		\$0	\$0	\$0	\$0	\$0					
Statewide Budget ROW		\$0	\$0	\$0	\$0	\$0					
Total		\$7,000,000	\$19,760,000	\$7,840,000	\$67,199,999	\$101,799,999					

APPENDIX B: HISTORY OF THE TIP AND TIP AMENDMENTS

The Policy Board approved the Abilene MPO's DRAFT 2023-2026 TIP on February 15, 2022.

The Policy Board approved the Abilene MPO's FINAL 2023-2026 TIP on April 19, 2022.

Administrative Amendment 1: Updated the 2022 Safety (PM 1) information per FHWA on November 2, 2022.

Amendment 2: The Policy Board approved the Amendment on _____. Changes were to the let dates, limits, funding, PM 1 Safety Measure updated to 2023 targets, addition of CSJ #0033-06-121 (split CSJ# 0033-05-089), and addition of CSJ#3068-01-015 (split of CSJ#3068-01-012).



Will be updated.

R-2022-01

ATTACHMENT A

TxDOT Updated Safety Performance Targets for FY 2022

2022 Safety Targets	Number of Fatalities (FARS/CRIS/ARF DATA)	Rate of Fatalities (FARS/CRIS/ARF DATA)	Number of Serious Injuries (FARS/CRIS DATA)	Serious Injury Rate (CRIS DATA)	Total Number of Non-Motorized Fatalities and Serious Injuries (FARS/CRIS DATA)
2018	3,648	1.29	14,975	5.31	2,104
2019	3,615	1.25	15,855	5.50	2,291
2020	3,896	1.33	14,656	5.00	2,238
2021 Target	3,384	1.24	18,835	6.51	2,560
2022 Target	3,272	1.23	19,065	6.47	2,642
2022 Target as a 5 year Average:	3,563	1.27	16,677	5.76	2,367

PROJECTS:

- Relocation of FM 1082 – re-open currently closed lanes of traffic.
- New overpass on US 83 at FM 3034 – reduce the number of conflict points.
- Rehab/widening of FM 3034 - reduce the number of conflict points.
- Rehab/widening FM 707 FM 89 to US 83 – reduce the number of conflict points.
- Widening IH 20 to Six Lanes from near Judge Ely to SH 351 – reduce number of conflict points.

Infrastructure Condition (PM2)

The Pavement and Bridge performance rule (PM2) establishes performance requirements to assess the condition of pavements and bridges designated on the National Highway System (NHS). Reporting and target setting are required for both Interstate Highways (IH) and Non-Interstate (Non-IH) National Highway System (NHS) designated facilities. The purpose of these performance measures and targets is to guide funding prioritization toward appropriate levels of maintenance in order to further the national goal of strategically and systematically maintaining the nation's transportation system in a good condition.

Action Requested

1. Any suggestions, deletions, or additions.
2. Approval of the amendment to the FYs 2023-2026 Transportation Improvement Program (TIP).

8. Receive a Report, Hold a Discussion, and Take Action on the FY 2022 Annual Performance and Expenditure Report (APER).

Background

Every year the Annual Performance & Expenditure Report (APER) and Annual Listing of Obligated Projects (ALOP) are due by December 31st to FHWA and FTA to ensure compliance. TxDOT requests that the reports be given to them by December 15th to allow time for their review.

The Annual Performance & Expenditure Report contains at a minimum: (i) Comparison of actual performance with established goals; (ii) Progress in meeting schedules; (iii) Status of expenditures in a format compatible with the work program, including a comparison of budgeted (approved) amounts and actual costs incurred; (iv) Cost overruns or underruns; (v) Approved work program revisions; and (vi) Other pertinent supporting data.

This document (based on Title 23, Code of Federal Regulations (CFR), Part 420.117) requires Federal approval prior to publication.

Current Situation

The APER was submitted to TxDOT on December 15, 2022. The APER was approved by TxDOT on December 19, 2022 and the Federal Highway Administration and the Federal Transit Administration accepted the report on January 3, 2023.

Recommendation from the Technical Advisory Committee (TAC)

The TAC at their February 7, 2023 meeting recognized the FY 2022 Annual Performance and Expenditure Report (APER) as presented.

FY 2022



ACCEPTED

01/3/2023

ANNUAL PERFORMANCE
& EXPENDITURE REPORT

OCTOBER 1, 2021 – SEPTEMBER 30, 2022

ABILENE METROPOLITAN PLANNING ORGANIZATION

DECEMBER 15, 2022



Abilene MPO FY 2022 APER

Abilene MPO FY 2022 APER

Table of Contents

Task 1 – Administration and Management	3
Subtask 1.1 Program Support and Administration	3
Subtask 1.2 Professional Development Training and Travel	6
Subtask 1.3 Public Participation, Education, Title VI, and Environmental Justice	7
Subtask 1.4 Transit Planning Management	13
Task 1 Funding Summary FY 2022	14
Task 2 – Data Development and Maintenance	14
Subtask 2.1 Geographic Information System (GIS) and Data Development	14
Subtask 2.2 Performance Measures	16
Subtask 2.3 Travel Demand Model	16
Subtask 2.4 Transit Planning Data	17
Task 2 Funding Summary FY 2022	17
Task 3 – Short Range Planning	18
Subtask 3.1 Transportation Improvement Program (TIP)	18
Subtask 3.2 Transit, Bicycle, and Multimodal Planning	18
Subtask 3.3 Short-Term Transit Planning	19
Task 3 Funding Summary FY 2022	21
Task 4 – Metropolitan Transportation Plan (MTP)	21
Subtask 4.1 Metropolitan Transportation Plan (MTP)	21
Subtask 4.2 Long-Range Transit Planning	22
Subtask 4.3 Complete Streets	23
Task 4 Funding Summary FY 2022	23
Task 5 – Special Studies	24
Subtask 5.1 Comprehensive Transportation Corridor Study: Loop 322/SH 36	24
Subtask 5.2 Comprehensive Growth Scenario Transportation Study: MPO Boundary Expansion	24
Subtask 5.3 Transit Multimodal Facility	24
Task 5 Funding Summary FY 2022	25
FY 2022 Budget Summaries	26
Total Transportation Planning Funds (TPF) Budgeted and Expended for FY 2022	26
Local Planning Funds Budgeted and Expended for FY 2022	26
FTA (Sec. 5307) Funds Budgeted and Expended for FY 2022	26
FTA (Sec. 5304) Funds Budgeted and Expended for FY 2022	27
Abilene Urbanized Area and Metropolitan Planning Area	28

Ride of Silence May 18, 2022



On June 17, 2022 we worked with D.R.I.V.E. Safe Coalition, Kent's Harley Davidson, City of Abilene, Texas Department of Transportation, Abilene Police Department, Townsquare Media (Abilene KOOL FM 100.7 Greatest Hits and Rock 108 Abilene's Rock Station), and Abilene Safety Instruction to host a Ride to Work Day. This event advocates and supports the use of motorcycles for transportation and provides awareness that we all share the road, so "Look Twice to Save a Life." As part of this event, the MPO participated in numerous radio and television interviews promoting motorcycle safety. This event had tremendous participation with well over 100 riders and lots of news coverage. The Abilene Police Department provided an escort throughout the route and did a wonderful job of keeping everyone together and safe. It was a great partnership that really displayed the power of a positive message and an outstanding group coming together for a cause.

Abilene MPO FY 2022 APER

Ride to Work June 17, 2022



[In 2021, the number of motorcycle traffic crashes in the Abilene District totaled 130. These crashes resulted in seven motorcyclists' deaths and 41 motorcyclists being seriously injured. In Texas, 519 motorcyclists died in 2021, up 7% from the year before. That is, on average, a Texas motorcycle rider killed every day in a traffic crash. Overall, in Texas, there were 8,132 motorcycle crashes. One third of motorcycle fatalities happen at an intersection. (Source: TxDOT Talking Points – 2022 "Share the Road: Look Twice for Motorcycles" Campaign)]

On May 25, 2022, the MPO worked with TxDOT on hosting the National Traffic Incident Management (TIM) Responder Training Program. This training was designed to promote consistent training for all responders along roadways. It was attended by TxDOT, Emergency Medical Services, Law Enforcement, Tow Truck Operators, and many more. It was an informative class that covered notification/scene size-up, safe vehicle positioning, scene safety, command responsibilities, traffic management, special circumstances, and clearance/termination.

TIM Training May 25, 2022



Abilene MPO FY 2022 APER

The Abilene Police Department (APD) National Night Out was held on October 5, 2021. The MPO operated a booth at the event that included information from the D.R.I.V.E Safe Coalition, TxDOT, and the MPO. It was a great opportunity for the public to learn what all three organizations do and how they could get involved. We also included games that the kids could enjoy while we talked to the parents.

APD National Night Out October 5, 2021



To coordinate planning efforts, the MPO participated in, presented, or hosted the following events:

EVENT	DATES
Abilene Police Department National Night Out	10/05/2021
Policy Board Meetings (every other month)	10/19/2021, 12/14/2021, 02/15/2022, 04/19/2022, 08/16/2022
Technical Advisory Committee Meetings (every other month)	11/30/2021, 01/25/2022, 03/29/2022, 05/24/2022, 09/27/2022
D.R.I.V.E. Safe Coalition	10/19/2021, 12/16/2021, 01/18/2022, 03/22/2022, 04/26/2022, 05/17/2022, 06/14/2022, 07/09/2022, 08/16/2022, 09/20/2022
Interagency Coordination Meeting with TxDOT staff	monthly
Citizen's Advisory Board for People with Disabilities	03/08/2022, 05/10/2022
FHWA UPWP Meeting	10/12/2021
Abilene Regional Coordinated Transportation Plan (RCTP)	10/13/2021, 11/10/21, 12/08/2021, 04/13/2022, 05/11/2022, 08/10/2022
TxDOT I-20 Corridor Study Working Group	06/15/2021, 10/19/2021, 05/12/2022, 09/09/2022
TxDOT Public Meeting on FM 3034	11/09/2021
Texas Pedestrian Safety Coalition Webinar Meeting	11/17/2021, 03/23/22

Any % over or under 75%

Task 2 & 4 – Loss of MPO staff

Task 5 – 5.1 (Loop Study) not starting as early as planned in the fiscal year and Task 5.2 (Boundary Expansion) initiated in-house rather than utilizing a consultant and Task 5.3 (Multimodal Facility) started late.

Action Requested

- 1. Recognition of the FY 2022 Annual Performance and Expenditure Report (APER).

FY 2022 Budget Summaries

Total Transportation Planning Fund: (TPF) Budgeted and Expended for FY 2022

UPWP TASK	DESCRIPTION	AMOUNT BUDGETED	AMOUNT EXPENDED	BALANCE	% Expended
1.0	Administration-Management	\$ 152,000.00	\$ 144,724.56	\$ 7,275.44	95.21%
2.0	Data Development and Maintenance	\$ 115,000.00	\$ 49,769.22	\$ 65,230.78	43.28%
3.0	Short Range Planning	\$ 20,000.00	\$ 15,014.78	\$ 4,985.22	75.07%
4.0	Metropolitan Transportation Plan	\$ 18,000.00	\$ 9,158.89	\$ 8,841.11	50.88%
5.0	Special Studies	\$ 50,000.00	\$ 20,997.50	\$ 29,002.50	42.00%
TOTAL	TOTAL	\$ 355,000.00	\$ 239,664.95	\$ 115,335.05	67.51%

Local Planning Fund: Budgeted and Expended for FY 2022

UPWP TASK	DESCRIPTION	AMOUNT BUDGETED	AMOUNT EXPENDED	BALANCE	% Expended
1.0	Administration-Management	\$ 1,000.00	\$ 1,000.00	\$ -	100.00%
2.0	Data Development and Maintenance	\$ 800.00	\$ 800.00	\$ -	100.00%
3.0	Short Range Planning	\$ 800.00	\$ 800.00	\$ -	100.00%
4.0	Metropolitan Transportation Plan	\$ 15,400.00	\$ 15,400.00	\$ -	100.00%
5.0	Special Studies	\$ 110,000.00	\$ 15,000.00	\$ 95,000.00	13.64%
TOTAL	TOTAL	\$ 128,000.00	\$ 33,000.00	\$ 95,000.00	25.78%

FTA (Sec. 5307) Funds Budgeted and Expended for FY 2022

UPWP TASK	DESCRIPTION	AMOUNT BUDGETED	AMOUNT EXPENDED	BALANCE	% Expended
1.0	Administration-Management	\$ 4,000.00	\$ 4,000.00	\$ -	100.00%
2.0	Data Development and Maintenance	\$ 3,200.00	\$ 3,200.00	\$ -	100.00%
3.0	Short Range Planning	\$ 3,200.00	\$ 3,200.00	\$ -	100.00%
4.0	Metropolitan Transportation Plan	\$ 1,600.00	\$ 1,600.00	\$ -	100.00%
5.0	Special Studies	\$ -	\$ -	\$ -	0.00%
TOTAL	TOTAL	\$ 12,000.00	\$ 12,000.00	\$ -	100.00%

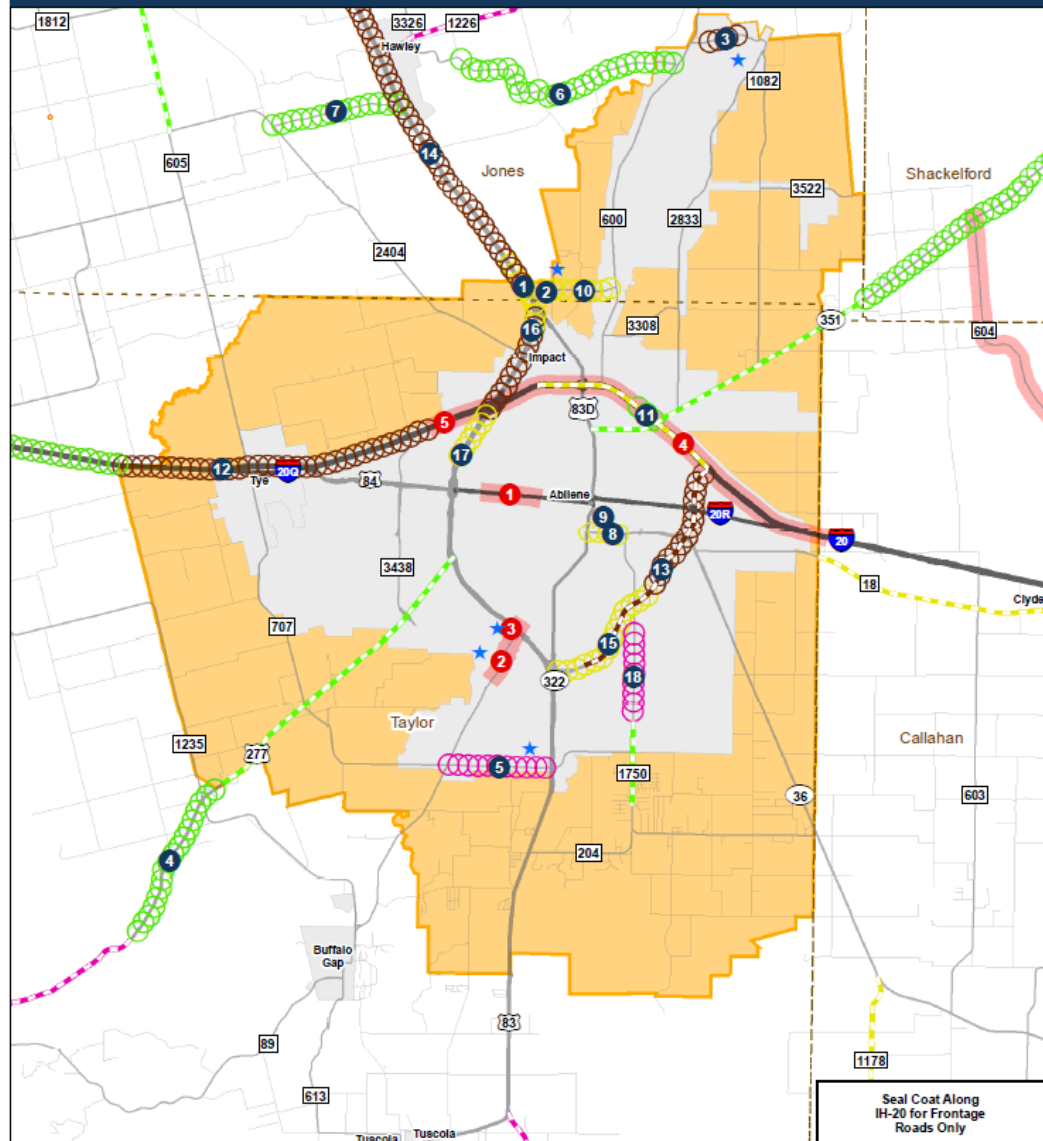
FTA (Sec. 5304) Funds Budgeted and Expended for FY 2022

UPWP TASK	DESCRIPTION	AMOUNT BUDGETED	AMOUNT EXPENDED	BALANCE	% Expended
1.0	Administration-Management	\$ -	\$ -	\$ -	0.00%
2.0	Data Development and Maintenance	\$ -	\$ -	\$ -	0.00%
3.0	Short Range Planning	\$ 35,000.00	\$ 35,000.00	\$ -	100.00%
4.0	Metropolitan Transportation Plan	\$ 75,000.00	\$ 75,000.00	\$ -	100.00%
5.0	Special Studies	\$ 440,000.00	\$ 60,000.00	\$ 380,000.00	13.64%
TOTAL	TOTAL	\$ 550,000.00	\$ 170,000.00	\$ 380,000.00	30.91%

9. Discussion and review of transportation projects.

(TxDOT Staff, City Staff, CityLink Staff)

TxDOT Abilene District



Legend Pavement Projects FY LET

2023

2024

2025

2026

SEAL COAT FY LET

2023

2024

2025

2026

CURRENT CONSTRUCTION

MPO_Boundary

2023-2026

Abilene MPO

★ = MPO Funds Included

2023-2026 Planned Projects

Site	C&J	ROADWAY	PC	DESCRIPTION	FROM	TO	LET YEAR
1	003305089	US 83	INC	CONSTRUCT BRIDGE	.67 MILES NORTH OF FM 3034	28 MILES SOUTH OF FM 3034	2024
2	306801012	FM 3034	RER	WIDEN ROAD - ADD SHOULDERS	US 83	FM 600	2024
3	097203021	FM 1082	NNF	CONSTRUCT NEW ROAD	WEST OF CHEYENNE CREEK ROAD	EAST OF DAM	2023
4	040706047	US 277	RER	REHABILITATE EXISTING ROADWAY	SOUTH END OF BNSF BRIDGE	3.7 MI SW OF FM 1235	2026
5	086301024	FM 707	WNF	WIDEN ROAD - ADD LANES AND SHOULDERS	FM 89 (BUFFALO GAP ROAD)	US 83	2025
6	097502023	FM 1082	SFT	WIDEN ROAD - ADD SHOULDERS	CR 361	FM 600	2026
7	097501022	FM 605	RER	SURFACING/ROADWAY RESTORATION	FM 2404	US 83	2026
8	018101067	SH 36	PED	BICYCLE AND PEDESTRIAN IMPROVEMENTS	BU 83D	FM1750	2024
9	090833106	ES 7TH	BR	REPLACE BRIDGE	AT CEDAR CREEK		2023
10	306801015	FM 3034	RER	REHABILITATE EXISTING ROADWAY	BRICK RD	FM 600	2024
11	000606109	H 20	WF	WIDEN ROAD - ADD LANES AND SHOULDERS	JUDGE ELY BLVD	SH 351	2026
12	000605125	H 20	OV	PREVENTIVE MAINTENANCE	NEAR WELLS LN	.75 MILES EAST OF HAYTER RD	2023
13	239801056	SL 322	SFT	MEDIAN BARRIER-CONCRETE	EN 16TH ST	LYTLE CREEK	2023
14	003305096	US 83	SFT	MEDIAN BARRIER-CABLE	FM 707	0.25 MI NORTH OF FM 3034	2023
15	239801055	SL 322	SFT	MEDIAN BARRIER-CONCRETE	LYTLE CREEK	US 83	2024
16	003306123	US 83	SFT	MEDIAN BARRIER-CONCRETE	BUS 83 INTERCHANGE	1300' NORTH OF AMBLER AVE	2023
17	003306120	US 83	SFT	MEDIAN BARRIER-CONCRETE	1300 FT N OF AMBLER	N 10TH ST	2024
18	165501036	FM 1750	SFT	INTERSECTION IMPROVEMENTS WITH TURN LANES	INDUSTRIAL BLVD	1200' SOUTH OF COLONY HILL RD	2025

Current Construction

SITE	C&J	ROADWAY	PC	DESCRIPTION	FROM	TO	CONTRACTOR
1	000816064	BI20-R	SFT	SAFETY IMPROVEMENT PROJECTS	LEGGETT DR	ROSS AVE	HIGHWAY INTELLIGENT TRAFFIC SOLUTIONS, INC.
2	089901451	FM 89	RER	REHABILITATION OF EXISTING ROAD	NEAR BETTES LANE	REBECCA LANE IN ABILENE	A. L. HELMCAMP, INC.
3	089901452	FM 89	WNF	WIDEN NON-FREEWAY	REBECCA LANE	JUST NORTH OF US 83	A. L. HELMCAMP, INC.
4	000806106	H 20	OV	OVERLAY	WEST OF OLD ANSON ROAD	CALLAHAN COUNTY LINE	NOBLES ROAD CONSTRUCTION, INC.
5	000805117	H 20	OV	OVERLAY	75 NIE OF HATER RD	WEST OF OLD ANSON ROAD	NOBLES ROAD CONSTRUCTION, INC.

Seal Coat Along
IH-20 for Frontage
Roads Only



0 1 2
Miles



City of Abilene

City of Abilene Proposed Project for CY 2023				
PUBLIC WORKS PROJECTS UNDER CONSTRUCTION				
PROJECT	FUNDING SOURCE	PERCENTAGE COMPLETE	CONTRACTOR	COST ESTIMATE
Honey Bee Re-alignment	Fort Phantom Lot Sales Funding	8%	Bontke Brothers Construction Co., Inc.	\$ 1,948,823.00
Maple (Carriage Hills to Loop 322)	2021 Bond	0%	Epic Construction	\$ 6,837,217.00
N 6th St & Cypress St Improvements	Street Maintenance Fee	62%	Bontke Brothers Construction Co., Inc.	\$ 745,099.50
N/ EN 10th Improvements (Treadaway to Judge Ely)	2021 Bond/DCOA	99%	Bontke Brothers Construction Co., Inc.	\$ 1,683,043.54
Five Points Roadway Improvements (Fulweier Rd and Marigold St)	DCOA	4%	Epic Construction	\$ 3,451,655.00
Work Zone N2A & N2B	Street Maintenance Fee	0%	J.H. Strain & Sons	\$ 2,693,658.00
Work Zone S11B	Street Maintenance Fee	0%	J.H. Strain & Sons	\$ 1,829,752.00
GRAND TOTAL				\$ 19,189,248.04
PUBLIC WORKS PROJECTS IN DESIGN -- PROPOSED FOR CONSTRUCTION IN CY2023				
PROJECT	FUNDING SOURCE	PERCENTAGE COMPLETE	BID YEAR	COST ESTIMATE
Work Zone S9C	Street Maintenance Fee	100%	2023	\$ 1,600,000.00
Work Zone S5 *	Street Maintenance Fee	0% Designed	2023	\$ 3,623,000.00
Work Zone S13 *	Street Maintenance Fee	0% Designed	2023	\$ 1,480,000.00
EN 10th (Judge Ely to 322 Loop)	2021 Bond/DCOA	100% Designed	2023	\$ 5,935,000.00
N 5th Two-way conversion	TBD	100% Designed	2023	\$ 1,000,000.00
Maple (Loop 322 to ES 11th)	2021 Bond	10% Designed	2023	\$ 12,740,000.00
S Willis St. @ S 7th St. Intersection	Street Maintenance Fee	0% Designed	2023	\$ 450,000.00
Pine St. @ N 10th St. Intersection	Street Maintenance Fee	50% Designed	2023	\$ 450,000.00
N 18th St. @ Kirkwood St. Intersection	Street Maintenance Fee	50% Designed	2023	\$ 100,000.00
N 14th St. @ Westwood Dr Intersection	Street Maintenance Fee	0% Designed	2023	\$ 100,000.00
S 14th St Walkability Project (Sidewalks/Ped Bridges)	TxDOT	0% Designed	2023	\$ 2,000,000.00
S 27th Improvements (S Danville to Barrow St)	Street Maintenance Fee/DCOA	40% Designed	2023	\$ 2,632,321.00
GRAND TOTAL				\$32,110,321.00

CityLink Transit

1. CityLink has partnered with First Transit and Spare to implement a micro transit pilot project in the northwest portion of the city. The launch date is scheduled for the end of February 2023.
2. The production of the 2 new large buses has been delayed. Delivery is expected late summer to early fall.

10. Discussion and review of reports:

- Financial Status
- Operation Report
 - Tasks
 - Training Sessions
 - Meetings
- Director's Report
 - Work Tasks
 - MPO Staffing
 - Year-end Report – Annual Listing of Obligated Projects (ALOP)
 - Comprehensive Transportation Corridor Study: Loop 322/SH 36 (Traffic Impact Analysis) Update
 - Public Participation Plan Update
 - Abilene Area Safety Plan
 - Travel Demand Model
 - Census 2020 Urban Area Designations

Financial Status

Fiscal year 2023					
October 1, 2022 thru September 30, 2023					
Date	Transaction	Additional Data	Authorization	Expenditure	Remaining Balance
12/16/2022	Work Order #1	FTA 5303/PL-112	\$204,468.77		\$204,468.77
01/10/2023	October 2022	Billing #1		\$9,678.05	\$194,790.72
01/10/2023	November 2022	Billing #2		\$30,286.65	\$164,504.07
02/15/2023	December 2022	Billing #3		\$24,239.47	\$140,264.60
TOTALS			\$204,468.77	\$64,204.17	\$140,264.60
updated as of 02/15/2023					

Operation Report

From **December 3, 2022 through February 13, 2023**, some of the tasks completed by the Abilene MPO include the following:

MPO Transportation/Transit Planning:

- Updated Texas Redistricting Maps (Abilene MPO representatives and their staff) for Congress, Senate and House. Updated district emails/contacts.
- Received the Loop 322/SH 36 Traffic Impact Analysis Study, reviewed/provided feedback, presented to the TAC/PB, and provided the Travel Demand Model portion to TxDOT.
- Prepared and submitted the FY 2022 Annual Performance and Expenditure Report to TxDOT, FHWA, FTA.
- Partnered with COA to submit a Transportation Alternatives Application Phase I.
- Coordinated with TxDOT and prepared amendments to the Metropolitan Transportation Plan (MTP), the 10-Year Plan, and the Transportation Improvement Program (TIP). Prepared and submitted a public notice requirement to the Abilene Reporter News.
- Prepared a resolution and researched data for the PM 1 FY 2023 Safety Performance Measure.
- Researched and provided comments back to TxDOT on the populations and households in the 461 Traffic Analysis Zones (TAZ) for our Travel Demand Model.
- Working on providing comments and research on the employment data for the 461 Traffic Analysis Zones (TAZ) for our Travel Demand Model.
- Began pulling the mapping data for the 2020 Census Qualifying Urban Areas to compare to the previous Census.
- Began working on the requirement for a new Abilene Area Safety Plan.
- Started work on the Annual Listing of Obligated Projects (ALOP).
- Researched and began pulling data on the PM 2 (Pavement and Bridge Condition) statistics for updating performance measures.

Attended training sessions on:

- *TEMPO Fall Meeting, Austin TX (12/08/23)*
- *CyberSecurity Awareness Training from KnowBe4 (01/18/23)*
- *Texas Transportation Forum FY 2023 Webinar (01/30-31/23)*

Some of the meetings attended by staff:

- *Abilene 2050 Forecast Model Kick-Off and Monthly Meetings (11/16/22, 02/08/23)*
- *Abilene 2050 Forecast Model (Travel Demand Model) TAZ Demographics (01/11/23, 01/18/23, 02/03/23)*
- *Public Meeting FM 707 Project (11/29/22)*
- *CityLink ZipZone Microtransit virtual presentation (12/21/22)*
- *Virtual Workshop – Transit Needs of Seniors and Individuals with Disabilities (01/11/23)*
- *RCTP Region 7 Quarterly Stakeholder Meeting (02/08/23)*
- *TEMPO Safety Task Force Discussion (02/10/23)*

Director's Report

Work Tasks

- ***MPO Staffing***

The Transportation Planner position has been open since June 10, 2022. Interviews have been conducted.

- ***Year-end Report - Annual Listing of Obligated Projects (ALOP)***

Every year the Annual Performance & Expenditure Report (APER) and Annual Listing of Obligated Projects (ALOP) are due by December 31st to FHWA and FTA to ensure compliance. TxDOT requests that the reports be given to them by December 15th to allow time for their review. TxDOT is in the process of preparing the information for the ALOP. Once we receive that, we will prepare the ALOP.

- ***Comprehensive Transportation Corridor Study: Loop 322/SH 36 (Traffic Impact Analysis) Update***

The Policy Board at their November 13, 2022 meeting accepted the report from Kimley-Horn. There were some administrative corrections made and the final report was received on January 24, 2023. The Travel Demand Model Update (conducted as part of this study) has been submitted to TxDOT for incorporation into the new forecasting model we are currently working on.

- ***Public Participation Plan Update***

The Public Participation Plan (PPP) will need to be updated in the near future to capture virtual meetings and miscellaneous changes to the current public participation activities.

- ***Abilene Area Safety Plan***

A new requirement for MPOs is to develop a Safety Action Plan. Currently there is funding for 23 MPO's at \$50,000 (\$1.2 million) out of the Federal State Planning and Research Funds (SPR) to develop a plan designed with local data and priorities. The plan will be due sometime around May 2023. The funding will have to be included in an amendment to the Unified Planning Work Program (UPWP).

- ***Travel Demand Model***

MPO staff is currently working with TxDOT and others on updating the Travel Demand Model (TDM). There are currently 461 Traffic Analysis Zones (TAZ) in the Abilene TDM. On January 13, 2023, staff provided comments back to TxDOT on the population and households for each of those TAZ areas. We are currently working towards providing information on the employment data broken down for each TAZ.

- ***Census 2020 Urban Area Designations***

The Federal Register came out for the 2020 Census Qualifying Urban Areas (UA) and the Final Criteria Clarifications on December 29, 2022. Staff is working on pulling the maps into the 2010 UA to see what changes might affect our area. We are also waiting on the Census-designated boundary maps to be released.

11. Opportunity for members of the Public to make comments on MPO issues.

12. Opportunity for Board Members, Technical Advisory Committee Members, or MPO Staff to recommend topics for future discussion or action.

13. Adjournment.

Our next meeting is: April 18, 2023

Thank you for all you do for transportation!